

ROTARIANS AGAINST MALARIA



LONG LASTING INSECTICIDAL NET DISTRIBUTION REPORT

CHIMBU PROVINCE Chuave, Karamui Nomane and Kerowagi Districts

Carried Out In Conjunction With The Provincial Government And Church
Health Services Of Chimbu Province

With Support from the Global Fund, Against Malaria Foundation and nets
contributed by the Chinese Government

27th June to 25th August 2020



Table of Contents

Executive Summary.....	3
Background	4
Schedule.....	7
Methodology	7
Results.....	11
Conclusions	13
Appendix One – History Of LLIN Distribution In PNG	14
Appendix Two – Malaria In Chimbu Province Compared With Other Provinces	19
Appendix Three - Malaria By Altitude.....	21
Appendix Four – Other Photographs.....	22
Annex One Detailed Distribution Data For Chuave District	
Annex Two Detailed Distribution Data For Karamui Nomane District	
Annex Three Detailed Distribution Data For Kerowagi District	

Please note that in the Annexes, villages shaded in yellow received conical nets from the Chinese Government in Nomane and Kerowagi and rectangular nets from the Global Fund in Chuave. All other areas shaded in green (dark green endemic malaria and light green epidemic prone areas below 1600m) received Safenets supplied by Against Malaria Foundation AMF.

Executive Summary

Chimbu Province is a province in the highlands of mainland Papua New Guinea (PNG). Chimbu Province in general has much of its population living at higher altitudes with only 5.6% of the population living below 1200m where malaria is endemic and these areas are all in Karamui of Karamui Nomane District. On the other side, about 20% of the population live in areas above 2000m where malaria is considered absent. The rest of the population live in malaria epidemic areas (19%) and the majority of the population (55%) living in areas which are considered areas of very low malaria transmission of *P.vivax* transmission only. This means that for practical purposes, most of the province has little risk to malaria except those living in Karamui and those living in the Waghi Valley where there is always a risk of epidemics.

The family level survey and distribution of Long-Lasting Insecticidal Nets (LLINs) was carried out in Chimbu Province in the districts of Chuave, Karamui Nomane and Kerowagi between 27th June and 25th August 2020. The population of Chuave, Kerowagi and Nomane are predominantly accessible by road with some villages needing trekking. However, Karamui can only be reached by air.

Table One shows the estimated population and actual population found along with the number of LLINs distributed by district. In total, 110,276 LLINs were distributed to a population of 222,041. This resulted in distribution of 49.7 nets for every 100 people in the province.

TABLE ONE – Population And Nets Distributed In 2020

District	Population from 2000 Census	Population Of Targeted Areas In 2017	Target Population 2020	Population Surveyed 2020	House Holds Surveyed 2020	Nets Issued 2020	Nets Distributed Per 100 People
Chuave	36,074	48,084	51,177	51,383	11,248	25,861	50.3
Karimi Nomane	36,334	55,988	59,021	56,599	10,474	28,837	50.9
Kerowagi	54,850	98,046	104,354	114,059	20,129	55,578	48.7
Totals	127,258	202,118	214,552	222,041	41,851	110,276	49.7

A further 756 LLINs were donated to health centres as nets were surplus to requirement or were no longer in bales and in most cases could not be easily returned to a central location. These nets would be used by pregnant mothers and for hospital beds where needed.

The overall operational cost of the programme was 472,000.79 Kina (Approximately US\$134,857) resulting in a cost of about 4.28 Kina or US\$1.22 per net delivered. This was about 25.0% over the anticipated budget. While there was some overspend in Car Hire and Human resources, the major issue was the program had to hire helicopters due to early rains setting in and two of the airfields becoming impossible for aircraft to land in Karamui.

Overall, the distribution went well in Chimbu Province with excellent collaboration from provincial health authorities which resulted in all targeted communities being reached and all household receiving nets. The only real problem occurred when early rains arrived in Karamui and an aircraft of Central Aviation got bogged down in Negabo Airstrip. Fortunately, the aircraft managed to free itself and take off but it meant that this and another airstrip could not longer be used which meant using a helicopter to assist which increased the overall cost of the program considerably.

Feedback from partners and communities suggest they were happy with the methodology used as the process appeared transparent to all concerned. However, as always, there were a few

families who complained that they did not receive enough nets but for the most part it is believed that this was a result of families not fully understanding the allocation system used.

Against Malaria Foundation (AMF) and the Chinese Government generously donated all the nets for areas below 1600m and above 1600m respectively for Chimbu Province while the Global Fund (GF) provided the delivery costs of nets at the family level. Without these three donors, the delivery of nets into Chimbu Province would not have been possible.

The history of LLIN distribution in PNG and Chimbu Province is discussed in Appendix One and the malaria situation and stratification of malaria in Chimbu Province are discussed in Appendix Two and Appendix Three. Historically it can be said that LLINs have had a tremendous impact on malaria in Chimbu Province particularly following the distribution of nets between 2009 and 2014. However, recent information appears to show that the LLINs are not having the same impact as had been previously expected and the introduction of these new types of nets was done to mitigate this problem. There have been indications that previous nets distributed have not been fully effective but it is hoped that the new nets will keep malaria out of the three districts in which this distribution occurred.



Fig.1 – Initial Pre-Planning Visit With Program Manager And The PHA (Left) And Initial Meeting With RAM Teams And The PHA When RAM Teams First Arrived In Chimbu (Right)

Background

Rotarians Against Malaria (RAM) is a nationally based organisation which was formed in 1997 by the Port Moresby Rotary Club in recognition of the tremendous burden that malaria imposes on the people of PNG.

RAM has an organizational mandate to work in malaria control and the distribution of LLINs in Papua New Guinea and has been working for many years with the National Department of Health (NDOH) and other partners including multilateral and bilateral agencies such as UNICEF and WHO (World Health Organisation), NGOs and church groups. (See Appendix One for full history of LLIN Distribution)

Since 2010, RAM has been coordinating the distribution of nets to all districts and provinces on a three-year recurrent cycle. This effectively means that RAM visits every village in PNG every three years. RAM has been funded by the Global Fund since 2009 and since 2017 also from Against Malaria Foundation (AMF) which supplied PNG with the majority of its nets in 2017 and from 2018 onwards to all areas below 1600m only where most of the malaria transmission can be found. The Global Fund resources therefore now mainly funds the LLIN distribution costs and other relevant administration costs. However, in 2020, PNG has been lucky to receive a donation of net from the Chinese Government and these were used for all

areas between 1600-2000m of altitude. It should also be noted that since 2015, the National Malaria Control Program no longer distributes nets in areas above 2000m as these are now considered too cold for malaria transmission to occur.

Generally, LLINs have been distributed to household level throughout the country but when shortage of funds occurred, different strategies of distribution have been used.

PNG can be roughly divided into five epidemiological zones.

- a) Areas which lie above 2000m in altitude which no longer receive LLINs as malaria transmission is not considered unlikely at these altitudes.
- b) Low lying areas of the country up to 1200m which have stable malaria endemicity and often have poor access to health continue to have household distributions.
- c) Areas from 1200 to 1600m which are generally considered to be of low transmission potential but traditionally have had occasional malaria epidemics due to poor immunity and changing weather conditions. LLIN distribution continue in these settings.
- d) Highlands regions between 1600 to 2000m in altitude such as Mount Hagen which have low malaria endemicity and generally easy access to health services. These are low priority areas and when funding is not available are left out. However, to date, these areas have been covered. From 2015 to 2016, these areas received nets for Under Five children only, and since 2017, to date, RAM has managed to find alternative sources to cover these areas. For example, in 2020, nets for these areas have been sources from the Chinese Government and in other areas from the Global Fund.
- e) In urban and peri-urban areas such as Port Moresby which are low lying areas with easy access to health, nets will not be distributed during funding constraints. Nets to these areas will be supplied through the private sector. Similarly, due to funding constraints in 2015, Lae City had Under Five Campaign LLINs only.



Fig.2 – Microplanning In Kerowagi HC (Left) And Kup HC (Right)

As a result of this stratification and when funds had been reduced such as at the end of 2014, areas above 2000m no longer received nets and areas from 1600 to 2000m only received under five campaigns in 2015 and 2016. However, fortunately, due to the LLIN donation from the Against Malaria Foundation (AMF) in 2017, all areas are now receiving household distribution of nets except areas above 2000m, and some urban areas such as NCD, Goroka, Mount Hagen and Mendi. However, funding for areas between 1600-2000 metres remains tentative after 2018 as AMF does not cover these areas but in 2020, Chimbu is fortunate in that the Chinese Government gave a large donation of nets, many of which have been used in the highlands.

For planning purposes, LLIN for household distribution is calculated at a rate of approximately one net for every two people for people who live below 2000m.

One of the conditions of the AMF donation is that RAM would strengthen the way in which surveys are carried out. These new innovative processes are described in the Methodology Section. These methodologies are now being carried out since the beginning of 2017. The major change to the survey methodology suggested by AMF is that previously a village meeting was called after a survey was carried out where names of family members were read out to ensure that all households had been surveyed. Instead of this process, a summary of every village surveyed is posted for 24 hours in a public place so that villages can ensure that all their family members have been included in the survey. As a further verification process, members of RAM and local health staff team carry out random house surveys of 6% of households in every village to ensure that the survey process has been carried out correctly.

For household LLIN distributions, regardless of where they are carried out, they must include a survey and a distribution phase though implementation methods may considerably vary depending on specific circumstances. RAM's approach has been to concentrate on programme quality thus RAM develop methodologies that ensure that all recipients in an area actually receive nets and that this can be reported accurately.

The other major change to the original PNG programme of 2004 to 2009 carried out by the NDOH is that nets are allocated to families on a needs basis rather than simply the number of people in the family. Data analysis of National Capital District (NCD) data has shown that this gives a ratio of nets needed to be about 47 for every 100 people. In the previous LLINs distribution of Round-3 in 2006 to 2010, nets were allocated at a rate of one net to every 2.5 people. With the programme only receiving 80% of LLIN needs, and most provinces distributing for example two nets to families of three, in practically every province, nets ran out before the end of the distribution. The RAM programme makes all attempts to assure that this distribution anomaly does not happen by collecting all population information at the beginning of the program and then allocate the nets based on family needs. This strategy is practiced to ensure that all families receive nets throughout any given province. The only scenario where survey and net distribution may be done simultaneously is in very remote locations where it is not practically possible to return a second time to a location. This is particularly the case in remote villages which can only be reached by boat or very long treks and it is costly and impractical to return to the villages for a second time.

In terms of coordination, RAM officers are allocated to specific LLGs or health centres where they coordinate the programme together with local health staff. In this capacity, RAM officers act as facilitators in terms of technical guidance to district health teams in each LLG as well as acting as financial officers and assuring quality control of activities taking place.



Fig.3 – Survey Volunteer Training In Wangoi (Left) And Norgar (Right)

TABLE TWO
General Timetable Of Activities In Chimbu Province

District	Survey		Distribution	
	Start	Finish	Start	Finish
Chuave	03.08.20	19.08.20	13.08.20	25.08.20
Karimi Nomane	30.06.20	03.08.20	19.07.20	16.08.20
Kerowagi	27.06.20	12.07.20	06.07.20	23.07.20

Schedule

Referring to Table Two, it can be seen that the distribution in Chimbu started on the 27th June in Kerowagi followed shortly afterwards by Nomane in Karamui Nomane. Chuave and the Fly In areas of Karamui were done last in August. All three districts completed their distributions by the 25th August 2020.

Methodology

Prior to planning and implementation, a master list of all villages of Chimbu Province was drawn up using data from the 2000 Census and the last RAM survey of 2017. Villages in the list were organised by LLG and Ward. In this master list, the estimated population for 2020 for each village was estimated and recorded in two ways. Firstly, the population of each village is estimated using population figures from the 2000 Census and the estimated annual growth rate for Chimbu Province and then secondly, by taking the population surveyed in 2016 and applying the annual growth rate to each village.

In all areas, Health Centres form the hub from which distribution takes place to the respective villages in each health centre's catchment area. Therefore, with the planning data at hand, RAM staff work together with the Provincial Health Office to allocate every village to its nearest health centre (government or Church Based) and outlines how each village is reached from each health centre. From this it is possible to create a budget, estimate how many nets are needed to be sent to each health centre and work out any other logistic considerations such as use of airplanes or boats to deliver nets to some remote areas.

Once all logistical needs are calculated and nets delivered to the province or district, a RAM team will travel to the province. Once they are in the province, RAM officers are allocated to work with each health centre which becomes the centre of operations for that area.

With the arrival of RAM officers, each health facility identifies health staff members or non-health community volunteers to be involved with the programme. If local health staff are selected, then they are referred to as District Health Team (DHT) but if a non-health staff is selected then they are termed as a Team Leader. Both DHTs and Team Leaders are responsible for the survey and distribution of nets. Each DHT and Team Leader works only in the area in which the health facility is based.

Before any activities take place, RAM officers are expected to work with health staff and other team leaders to make detailed plans (micro-planning) of their activities for training, survey, verification and distribution of nets. This process involves making maps of the area, deciding how many teams are needed, and then making detailed work plans for each of the team members. This process also involves verifying that no villages have been left out of the census list and that the whole area is covered.

Also prior to field activities in any given LLG or health centre, a social awareness campaign was carried out in all villages informing villagers of the upcoming survey and distribution. This was also used as an opportunity for RAM officers to become familiar with each area. During

this process, key malaria messages were also discussed with villagers such as the need to use LLINs every night.

During the social awareness campaign, a daylong training meeting is normally held at each health facility for all DHT members in that area who jointly carry out the micro-planning exercise. These training and micro-planning sessions as well as all other activities associated with the programme are coordinated by RAM project officers together with health counterparts at provincial and district levels. RAM officers also have the responsibility to ensure the LLINs operation is kept in line with the original budget.

Survey

The survey was carried out in the following way.

- 1) When arriving at a village and before starting the census process, a meeting was held with village elders explaining the process.
- 2) If village elders have an up to date list of all village occupants, the team would use this list to compile a census but still visit every household to confirm this information.
- 3) Where a village is small, e.g. less than 30 families, team members may carry out the census by themselves.
- 4) Where villages are large, village volunteers were identified with the assistance of the village chiefs, elders, health staff and councillors. One volunteer was chosen for each group of about 50 families with volunteers chosen by natural divisions in the village e.g. clans where one volunteer would make a list of only one clan. These volunteers were trained to carry out the survey by actually surveying houses with the team leaders supervising and assessing the recording. Once the team leader was confident that the volunteers knew the survey methodology, they were left to continue with the household survey with survey teams returning within an agreed period to verify the work of the survey volunteers, collect survey books and also to pay the survey volunteer, provided that the work was carried out correctly. The training of volunteers may occur in groups or individually depending on access to the village and its proximity to other villages.



Fig.4 Survey Verification - Public Notice In Bogo (Left) And Haia (Right)

- 5) For each household surveyed, all family members who normally reside at the household for a minimum of nine months were recorded by Name, Age, Sex and Relationship to head of household. All names and other information was recorded in the survey book with one survey form being used for each household.
- 6) After surveying a household, a white copy of the census form was given to the head of household or most senior person present in the household.

- 7) Where a whole household was absent, information was taken from the neighbours and the white survey form left with them.
- 8) In all cases, after the census/list was finished, all the information about the households and number of household members is entered into a summary sheet. This list is then hung in a public place where all villages can verify that the right number of family members for each household has been recorded and that all families have been included in the survey. After the list has been in a public place for 24 hours, then the volunteer requests for the RAM officer and or DHT to visit the village.
- 9) RAM officers and DHTs must visit three households randomly from each survey book (6%) and verify that the survey has been carried out correctly. Only when this has been done, then the volunteer can be paid.
- 10) If a village was surveyed by more than one volunteer, then volunteers were asked to work together so that lists can be hung together and the village volunteers can be verified at the same time. This process also ensures that households do not appear on more than one list. After this process, both the volunteers and the village elders sign a form to verify that this was done.
- 11) All village volunteers received a standard payment of 20 kina a day. Experience has shown that volunteers can usually only survey about 25 households a day, so for the most part, they would receive up to two days' allowance to complete a survey book (50 households).
- 12) All volunteers were also given a small training manual. Contained in this training manual are key health education messages about malaria which volunteers are expected to discuss with households. This perhaps is the only project in PNG that is able to reach down to potentially every household in the country.

To aid with the survey, the master plan with names of all census units in all the wards in the district had been printed out and given to all the DHTs and team leaders. This document also provides the projected population per census unit as well as other information which might be useful to the area concerned.

After collecting survey data from each village, the information is immediately compared with the data on the master sheet. Where the surveyed population is very different from the projected population, the project staff make enquiries into the reasons for these discrepancies.

Following the survey, all data was entered into a computer where possible or entered into a master sheet of the area concerned. For each village, nets were allocated to each family on a needs basis and this is also entered into the computer or master sheet. This process ensured that all villages received nets and that there would be no shortfalls.

The needs basis in PNG is based on the assumption that children under the age of six sleep with their parents, after which boys and girls are grouped separately from their parents. Nets are also allocated based on the number of children in the house, their ages, and whether there are other dependents living in the households such as grandparents. A full description of the allocation system can be obtained from RAM officers but suffice to say a family of four could receive between one to four nets depending on the sex and age of family members.

Nets are allocated to each LLG based on assumed populations of each LLG and it was important prior to the distribution to ensure that when allocations had been carried out to families and villages that there were enough nets available to cover each and every family.

Distribution

There was no official launch for the LLINs distribution in Chimbu Province. However, prior to distribution there was a social awareness phase where the project teams informed communities about the arrival of the distribution teams, especially those accessible by road.

The LLINs were then distributed to teams depending on the needs of each village. The LLINs were then distributed by village or wards depending on whether villages were close together. In this latter case, a central location was identified in the ward and then distribution of nets was carried out. In terms of distribution sites, villages were organised in different ways to make the flow of nets easy and effective. However, the actual organisation depended on each team and the structure of the various groups receiving nets.

All net packaging was opened at distribution site with a district code printed on each net e.g. CHP20 meaning Chimbu Province 2020. This code is added to identify nets to assist in future monitoring exercises as well as discouraging householders from selling the nets on the open market.

Some examples of the process used to control the crowd includes;

- Arranging the people according to the serial numbers in the survey books e.g. 72001 - 72050 and then calling the names and the serial numbers.
- Call the names of the owners of the households, collect the white copy and give the nets.
- Wait for everyone to come to the distribution site, collect all the white copies and sort the copies with the pink copies. Call the names on the white copies and give the nets.

Some of the following control methods were used.

- Everyone who presented with a white copy was given LLINs at the distribution site with LLINs only given to the owner of the house or a member of the house whose name is written on the back of the survey form.
- Those people who lost the white receipts were left to the end of each distribution, with nets only being issued if the name of the person collecting the nets was found on the back of the pink copies.
- For those families who were absent at the time of distribution, their names were written in a form – MOSQUITO NETS HELD IN TRUST BY VILLAGE CHIEFS FORM and the nets allocated to missing families were given to chiefs or any person entrusted by the community with the forms for these families to collect their LLINs later.
- Householders are now being asked to make a thumb print as proof of delivery of nets to a household. The Global Fund had formally asked that householders should sign for delivery of nets. This was considered problematic as many householders are illiterate and even where householders can write, this process takes a long time in what is often a very chaotic and charged environment where speed is of the essence.

It should also be noted that surveys and distributions took place at more or less the same time in some remote places of Chimbu Province. This is particularly true for mountainous villages or small islands which might take several hours or days to reach. In these instances, estimations based on the 2000 Census data and local knowledge used to pre-allocate nets. Teams were then dispatched to these areas with nets. On arrival in these remote places, surveys took place and were immediately followed by a distribution based on the survey results.

Other details

In the case of Chimbu Province, all LLINs were ultimately delivered to Lae by ship from China. In the case of AMF nets these came in about three containers directly from China and were rectangular and blue in colour. These nets are known as SafeNet and were supplied without plastic packaging to reduce the environmental impact of plastics in PNG. The remaining nets were part of a Chinese Donation of 600,000 white conical nets which were delivered to the National Department of Health in Port Moresby. Some of these nets were allocated to the

highlands and for this reason RAM purchased containers and shipped the nets to Lae. All nets arriving in Lae were stored in the Mapai Transport yard before being sent by truck to Mount Hagen and Goroka. Net sent to Mount Hagen were delivered by truck to Kerowagi and Kundiawa (Capital of Chimbu Province) for distribution in Kerowagi and Nomane and by air to Karamui. Nets for Chimbu Province were supplied from Goroka.

Results

Table Three shows the estimated population and actual population found in Chimbu along with the number of LLINs distributed while Table Four shows the same information but by LLG. In total, 110,276 LLINs were distributed to a population of 222,041 people. This resulted in distribution of 49.7 nets for every 100 people in the province.

Referring to both Table Three and Table Four, it can be seen that the overall population growth rate appears to have risen compared with previous periods in which distributions have been carried out. It is not clear why these population growths are so large in Kerowagi, but in case of Karamui Nomane where a very small increase has been noted this is probably a result of rural urban drift from places with very few services. Alternatively, in 2017, the population growth of Kerowagi was much lower than expected and it was thought at this time that people were migrating to Madang and Lae City. One possibility is that this migration has reversed particularly with issues related to Covid 19 and people not being able to find work in the lowland areas have returned home.

TABLE THREE
Nets Distributed At District Level In Chimbu Province

District	Population from 2000 Census	Population Of Targeted Areas In 2017	Target Population 2020	Population Surveyed 2020	House Holds Surveyed 2020	Nets Issued 2020	Nets Distributed Per 100 People	Growth Rate Against 2016 Survey
Chuave	36,074	48,084	51,177	51,383	11,248	25,861	50.3	2.24
Karimui Nomane	36,334	55,988	59,021	56,599	10,474	28,837	50.9	0.36
Kerowagi	54,850	98,046	104,354	114,059	20,129	55,578	48.7	5.17
Totals	127,258	202,118	214,552	222,041	41,851	110,276	49.7	3.18

TABLE FOUR
Net Distributed At LLG Level In Chimbu Province

LLG	District	Population from 2000 Census	Population Of Targeted Areas In 2017	Target Population 2020	Population Surveyed 2020	House Holds Surveyed 2020	Nets Issued 2020	Growth Rate Against 2016 Survey	Nets Distributed Per 100 People
Chuave Rural	Chuave	11,983	17,269	18,380	18,016	3,719	9,148	1.42	50.8
Elimbari Rural	Chuave	12,828	14,706	15,652	16,800	3,700	8,368	4.54	49.8
Siane Rural	Chuave	11,263	16,109	17,145	16,567	3,829	8,345	0.94	50.4
Karimui Rural	Karimi Nomane	16,864	30,018	31,949	31,460	5,362	15,978	1.58	50.8
Nomane Rural	Karimi Nomane	6,707	8,597	8,962	8,719	1,684	4,380	0.47	50.2
Salt Rural	Karimi Nomane	12,763	17,373	18,110	16,420	3,428	8,479	-1.86	51.6
Gena\Waugla Rural	Kerowagi	15,800	29,525	31,424	34,669	6,302	17,590	5.50	50.7
Kerowagi Rurl	Kerowagi	26,618	50,188	53,417	58,932	10,396	27,592	5.50	46.8
Kup Rural	Kerowagi	12,432	18,333	19,512	20,458	3,431	10,396	3.72	50.8
Totals		127,258	202,118	214,552	222,041	41,851	110,276	3.18	49.7

Table Five shows that 781 nets were left over at the end of the program and were donated to health centres. In general, these nets were left where the nets were loose and no longer in

bales the return of the nets were few or could be difficult to return to a central location. In general, these nets would be used for hospital beds or for antenatal mothers.

TABLE FIVE
Nets Donated To Health Centres

District	LLG	HC	Donated
Chuave	Siane Rural	Yandime HC	15
Karimui Nomane	Karimui Rural	Sigamuru HC	192
Karimui Nomane	Karimui Rural	Negabo HC	137
Karimui Nomane	Karimui Rural	Bomai HC	74
Karimui Nomane	Karimui Rural	Haia HC	18
Karimui Nomane	Nomane Rural	Nomane HC	120
Kerowaghi	Kerowagi Rural	Demange HC	20
Kerowaghi	Kerowagi Rural	Miunde HC	22
Kerowaghi	Kerowagi Rural	Bogo HC	8
Kerowaghi	Kup Rural	Kup HC	50
TOTAL			756

Based on Table Six, it can be seen that the overall operational cost of the programme was 472,000.79 Kina (Approximately US\$134,857) resulting in a cost of about 4.28 Kina or US\$1.22 per net delivered. The overall cost was about 25.0% over the anticipated budget. While there was some overspend in Car Hire and Human resources, the major issue was the program had to hire helicopters due to early rains setting in and two of the airfields becoming impossible for aircraft to land in Karamui. It is also noted that fuel is much less than expected. This may be a result of buying fuel in bulk in Mount Hagen due to the remote locations of some areas where fuel service stations are absent. It is believed that some of the fuel drums were costed to other provinces.

TABLE SIX
Cost Of Programme In Chimbu Province (All Costs in Kina)

Expense Types	Budget	Actual	Variances	% Variance
Human Resources	K125,818.35	K141,680.00	-15,861.65	-12.6
Fuel Cost	K28,158.00	K8,351.07	19,806.93	29.7
Car Hire Cost	K176,400.00	K212,700.00	-36,300.00	-20.6
Aircraft Hire Cost	K27,500.00	K102,680.00	-75,180.00	-273.4
Stationeries/Supplies	K3,000.00	K3,508.95	-508.95	-17.0
5% Contingency	K16,783.82	K3,080.77	13,703.05	18.4
Totals	K377,660.17	K472,000.79	-94,340.62	-25.0

TABLE SEVEN
Cell and Radio Coverage In Chimbu Province

District	Villages	House Holds Surveyed	Digicel	Bmobile	City Phone	Houses with Radios	Villages With Radio Networks
Chuave	237	11,248	227	54	0	4,014	197
Karimi Nomane	200	10,474	186	27	0	1,589	191
Kerowagi	241	20,129	239	105	0	5,561	239
Total	678	41,851	652	186	0	11,164	627

The project also looked at radio or cell phone coverage in the different parts of Chimbu Province. Referring to Table Seven, it can be seen that radio and cell phone coverage is exceptionally good compared in Chimbu and generally much better than other parts of the country, even in the remotest areas. Getting health information to village level with this level of coverage of both radio and cell phones should be relatively simple.



Fig.5 – Distributions In Kerowagi (Left) And Mingende (Right)

Conclusions

Overall, it can be said that the LLIN distribution in Chimbu Province was generally a huge success both in terms of results and collaborative work done by staff from RAM, provincial and district health authorities, and the Catholic Church, Lutheran Church, Anglican Church and Seventh Day Adventist Church Health Services who have a presence in the province. Through this collaboration, the data suggests that all villages and practically all families in those villages received nets despite many local challenges.

The only real problem occurred when early rains arrived in Karamui and an aircraft of Central Aviation got bogged down in Negabo Airstrip. Fortunately, the aircraft managed to free itself and take off but it meant that this and another airstrip could no longer be used which meant using a helicopter to assist which increased the overall cost of the program considerably.

Due to increased economic pressures due to Covid 19, RAM had received reports of volunteers charging villagers for nets and registration in Western Highlands and Jiwaka. It is good to report that no such incidents were reported in Chimbu. This is believed to be a result of increased advocacy against this in meeting with provincial, district, health centre staff and with volunteers themselves.

As with other provinces in the country where RAM has operated in over the last ten years, the methodologies used this time, including survey verification processes appeared practical and were openly welcomed by both villagers and implementers, particularly the practice of hanging up the list of names in the middle of the village following a survey. This allowed communities to feel that they were part of a transparent process. This is not to say that perhaps some extra people managed to slip into the books, but in general, it was felt that the system was fair and included practically everyone concerned. The use of the master lists also ensured that all villages were reached and accounted for.

The review of the data prior to the distribution was also important. This ensured that all villages and families received the correct numbers of nets. The 2000 Census Lists were very important to ensure that survey teams reached all villages: without the complete list of villages, it would be very difficult to make a detailed report.



Fig.6 – Distributions in Wangoi (Left) And Haia (Right)

The greatest complaint still received from communities was the number of nets they received. Even though the team explained the logic of how the allocation of nets is calculated, some families were expecting one net per person, others expected it to be based on a fixed allocation based on the number of people in the family, and yet others thought they would be given nets based on the number of nets they stated they already had. This highlights that a better system of explaining the allocation system still needs to be developed. In general, unlike some previous districts covered by RAM and DHTs of Chimbu Province assisted in the allocation of the nets which meant they were in a better position to explain the distribution system on the ground. Nevertheless, despite all the difficulties involved, it would appear that the vast majority of community members accepted the outcome and there were no real problems or complaints encountered.

Acknowledgements

On behalf of the Rotarians Against Malaria, the household distribution team who worked in Kerowagi, Karamui Nomane and Chuave districts, would like to sincerely acknowledge and thank the Chimbu Provincial Health Authority and the District Health Staff of the three districts for the excellent help and cooperation during the Long Lasting Insecticide Nets (LLINs) distribution programme.

In particular, we would like to thank at provincial level Dr Francis Wandi (Chief Executive Officer) and his team with special thanks to Mr Jerry Kubu (Director Public Health), Mr Titus Tul (Rural Health Services Coordinator), Mr Mathew Boi (Provincial Disease Control Officer) and Mr Menau Manga (Malaria Surveillance Officer).

For the district staff, we would like to sincerely thank all those who tirelessly took part in the programme, and in particular we would like to mention the following people who were instrumental in providing the local expertise and advice from planning to implementation of the programme in the three districts namely:

Kerowagi District

Name	Occupation	Institution
Mr. John Kerenga	District Disease Control Officer	Kerowagi District
Mr. Steven Gene	District Health Officer	Kerowagi District
Mr. Peter Kelly	Disease Control-Catholic Health Services	Kerowagi District
Mr. Thomas Sipa	Deputy Director-Nursing Services	Migende Health Centre
Mr. Joe Tul	LLG Census Coordinator	Kup Health Centre
Mr. Joseph Temen	Officer in Charge	Kup Health Centre

Mr. Thomas Mondo	Officer in Charge	Miunde Health Centre
Mrs. Rita Mondo	Senior Nurse	Miunde Health Centre
Mr. Korond Siwi	Officer in Charge	Demange Health Centre
Mr. Baron Danga	Community Health Worker	Kewamugl Aid Post
Sr. Lois Felix	Community Health Worker	Kewamugl Aid Post
Sr. Martha	Community Health Worker	Demange Health Centre
Sr. Miriam	Community Health Worker	Demange Health Centre
Mrs. Clare Tamaga	Officer in Charge	Bogo Health Centre
Mr. Bomai Benson	Community Health Worker	Nogar Health Centre
Mr. Kawagle William	Community Health Worker	Nogar Health Centre
Mr. James Kinim	Chairman	Kendine Health Centre

Karamui Nomane District

Name	Occupation	Institution
Mr. Lucas Koi	District Disease Control Officer	Karimui District
Mr. Raphael Sipa	Community Health Worker	Kilau Health Centre
Mr. David Moses	District Health Officer	Salt Nomane-Karimui Nomane
Mr. Elvis Abba	Officer in Charge	Bomai Health Centre
Mr. Tom Kui	Health Centre Committee	Bomai Health Centre
Mr. Nimson Nimiyaasi	Officer in Charge	Haia Health Centre
Mr. Noel Tombe	Community Health Worker	Haia Health Centre
Mr. Joe Mathew	Officer in Charge	Sigamaru Health Centre
Mr. Wesley John	Community Health Worker	Nomane Health Centre

Chuave District

Name	Occupation	Institution
Mr. Andrew Kumanar	District Disease Control Officer	Chuave District
Mr. Donald Korango	Officer in Charge	Yandime Health Centre
Mr. Kene Baro	Nursing Officer	Yandime Health Centre
Mr. Caspar	Officer in Charge	Wangoi Health Centre
Mr. Bonny Goro	Community Health Worker	Wangoi Health Centre
Mr. Joe Kora	Community Health Worker	Monono Health Centre

RAM would like to specially acknowledge the support received from established and local service providers for logistical support namely; Mapai for transporting eight containers from Lae to Western Highlands and then to Chimbu having two stationed at Kundiawa, two at Kerowagi and three at Chuave.

RAM also thanks Airport hire car, Pishon hire car, Manawa hire car, Fly hire car and all the local hire car owners for providing their service for this operation. We would not have reached many communities without the dedication of the drivers. RAM also extends its gratitude to Central Aviation who provided us aircraft support and Heli Solutions who provided helicopter support to reach remote areas where the airplane could not land. RAM would like to also thank Puma Energy for supplying bulk fuel for the operation.

RAM also thanks all the church run health facilities coordinated under Catholic Church, Lutheran Church, Seventh Day Adventist Church, Anglican Church and lastly to all the Government run facilities for allowing their staff to work with the RAM team.

Last but not the least, RAM would like to extend our acknowledgement and appreciation to all the hard working volunteers and local community leaders for ensuring all homes were surveyed and assisted in distributing all the nets. RAM thanks you all very much for your hard work, support and local expertise in making the overall program a success.

Appendix One – History Of LLIN Distribution In PNG

The use of Insecticide Treated Nets (ITNs) started in PNG in 1985 when the PNG Institute of Medical Research (IMR) conducted one of the first trials demonstrating the health impact of treating mosquito nets with insecticide. The study, done near Madang, showed a reduction of *P.falciparum* incidence and prevalence in children below five years of age sleeping under permethrin-treated nets. The protective effect of insecticide-treated nets (ITNs) was also confirmed in many other trials around the world. As a consequence of such findings, the national malaria control program in PNG started emphasizing the use of ITNs in 1989. However, no regular or large-scale distribution of ITNs was carried out at this time.

In the following years, coverage with mosquito nets and other control interventions remained patchy and low in many parts of PNG. It was during this period that Rotarians Against Malaria (RAM) was created from the Port Moresby Rotary Club in 1997. Using a donation of 150,000 treated nets given to them from the National Department of Health (originally from AusAid), RAM successfully ran a revolving fund of nets in which nets were sold at a price which allowed the proceeds to buy more nets. RAM did this successfully for many years distributing about 45,000 treated nets a year from 2000 to 2004.

Prior to 2004, most treated nets had to be re-treated every six months or a year which requires a lot of work and organisation. In early 2004 everything changed with the introduction of Long-Lasting Insecticidal Nets (LLINs) which would last for 20 heavy duty washes and effectively no longer required to be treated repeated. This change in nets also coincided with the introduction of the Global Fund into PNG known as the Global Fund Round 3.

From 2005 to 2009 the malaria programme in PNG received and delivered about 2.3 million nets throughout the country at a rate of one net for every 2.5 people. The delivery of nets to village level was under the provincial health authorities and reached most parts of the country with Rotarians Against Malaria (RAM) being responsible in delivering the containers of nets to the provinces from Port Moresby and Lae where the nets arrived from overseas.

While the programme was very successful in some areas it was not so successful in others. Problems included slow release of funds from central to provincial level, some provinces not following technical guidelines given resulting in some areas not been covered, and technical and financial reporting leaving a lot to be desired in many of the provinces. When further funds became available in what is known as the Global Fund Round Eight, it was decided that Rotarians Against Malaria (RAM) would take over the coordination of the LLIN programme.

This change has resulted in RAM being responsible for the overall coordination of the LLIN distribution of LLINs in the country particularly in the areas of quantification, procurement, reporting and delivery to provincial and district level. However, the actual delivery of nets to village level is a collaboration between RAM, provincial health authorities and district health and health centre staff.

Fig.1 shows the distribution of nets to districts and provinces from 2006 to 2009 while Fig.2 shows the distribution of nets from 2010 to 2014 and Fig.3 shows the distribution from 2015 to 2017 which includes under five distributions in 2016 and 2017. Under Five distributions had been carried out in areas above 1600m and in Port Moresby and Lae City due to lack of funds. This situation changed when support from Against Malaria Foundation was received.

Up until December 2018, a total of 11.2 million LLINs had been distributed to household level under the coordination of RAM. Therefore, with the 2.5 million nets distributed from 2006 to 2009, this means that about 13.7 million nets have been delivered to household level in PNG since 2006. This is more than one net per every person in PNG. RAM has also distributed

about another 1.5 million nets to health centres for distribution to pregnant women and for prisons and boarding schools.

It should also be noted that alongside developments related to treated mosquito nets, the first cases of chloroquine-resistant malaria were reported in 1976. This progressed rapidly to widespread resistance of *P.falciparum*, and to a slightly lesser extent *P.vivax*, to chloroquine, amodiaquine and sulphadoxine-pyrimethamine (SP). In studies conducted between 2003 and 2005, even combination regimens of these drugs faced up to 29% resistance of *P. falciparum*². This situation together with Global Fund Round 8 also saw the introduction of artemether lumefantrine branded as Malawan, IPT (Intermittent Preventative Treatment) for antenatal women.

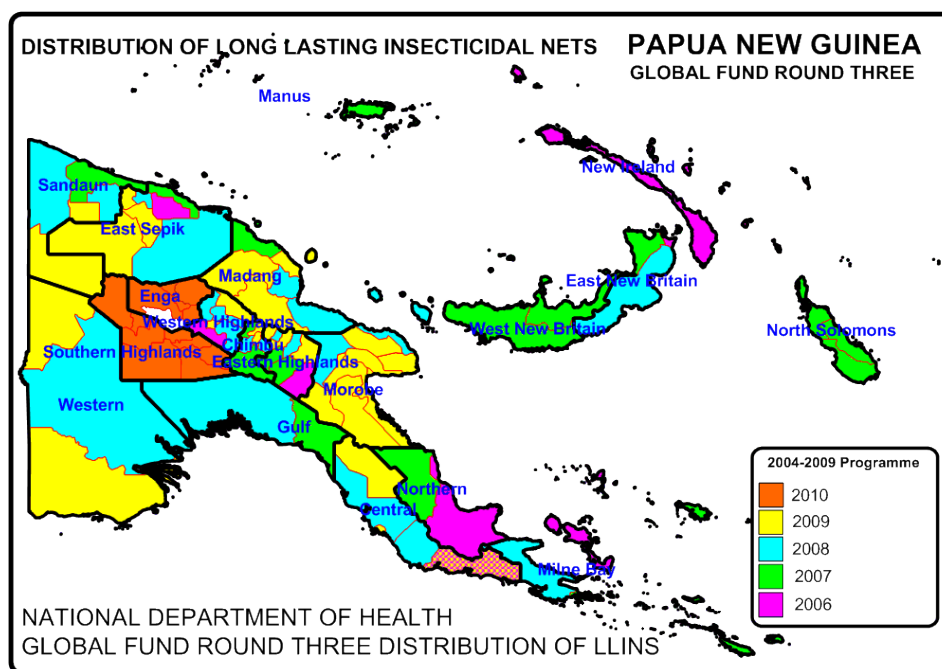


Fig. 1 Distribution Of Nets Under National Department Of Health From 2006 To 2010

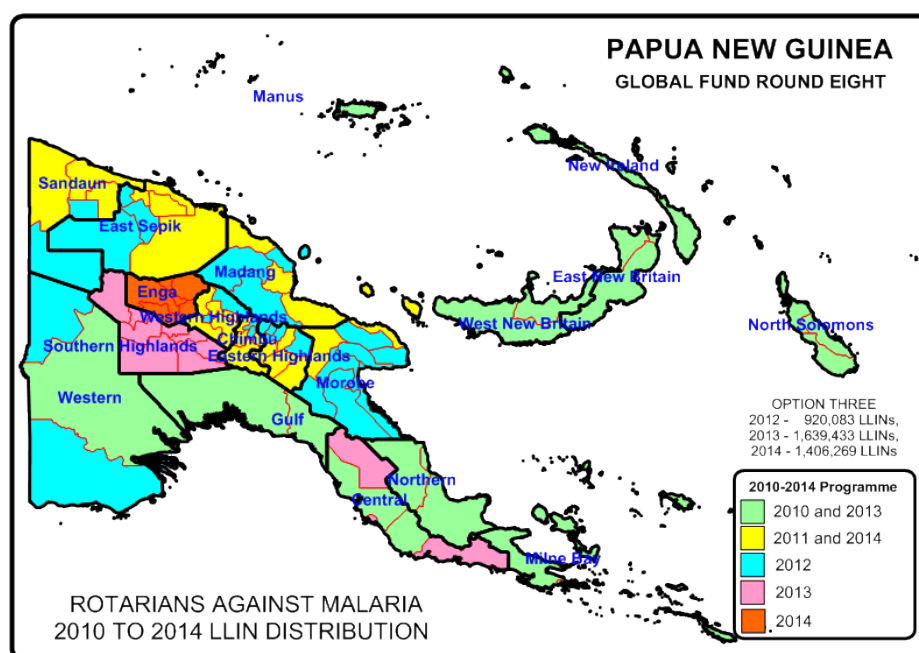


Fig.2 Distribution of LLIN Programme 2010 to 2014

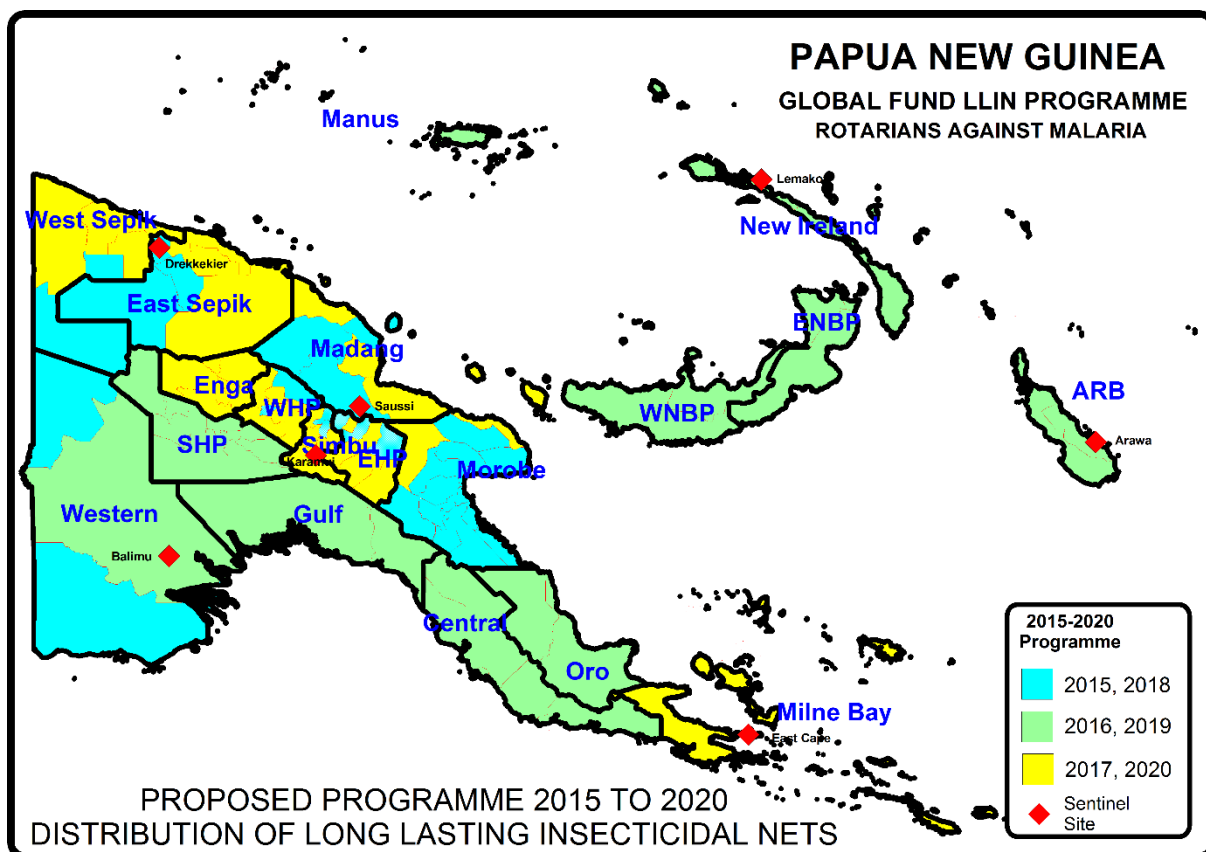


Fig.3 LLIN Distribution Programme 2015 to 2020

TABLE ONE - LLINs Delivered In PNG Under Coordination Of RAM From 2010

Period	Dates	Districts	Provinces	Nets Delivered
Phase One (2010-2011)	Nov 09 - Oct 11	50 Districts	18 Provinces	1,890,448
Year 3 (2012)	Nov 11 - Sep 12	27 Districts	10 Provinces	832,671
Year 4 (2013)	Oct 12 - Sep 13	28 Districts	12 Provinces	1,210,391
Year 5 (2014)	Oct 13 - Sep 14	23 Districts	11 Provinces	1,374,791
Year 5 (2014) No Cost Extension	Oct 14 - Dec 14	Okapa, Lufa, Madang, Angoram, Maprik, Yangoru Saussu, Wewak, Aitape Lumi, Nuku and Vanimo Green	EHP, Madang, East Sepik and Sandaun	454,806
Year 6 (2015)	Jan - Dec 2015	29 Districts	11 Provinces	932,822
Year 7 (2016)	Jan - Dec 2016	27 Districts	13 Provinces	805,597
Year 8 (2017)	Jan - Dec 2017	36 Districts	13 Provinces	1,543,947
Year 9 (2018)	Jan - Dec 2018	27 Districts	11 Provinces	1,211,922
Year 10 (2019)	Jan - Dec 2019	26 Districts	12 Provinces	1,266,525
	Jan - Mar 2020	Pomio, Rabaul, Kokopo, Samurai Murua, Kiriwina Goodenough, Ess'ala, Alotau, Wabag	East New Britain, Milne Bay, Enga	296,227
	Apr - Jun 2020	Mul Bayer, Tambul Nebliyer, North Waghi, Anglimp South Waghi	Enga, Western Highlands, Jiwaka	356,781
New Funding Model (2015-2018)				6,413,821
Round Eight (2010 - 2014)				5,763,107
Overall Total Phase One and Phase Two And NFM				12,176,928

Appendix Two – Malaria In Chimbu Province Compared With Other Provinces

Fig.1 shows the decrease of malaria from 2007 to 2015 in all provinces, Fig. 2 shows the actual malaria incidence in 2019 in compared with other provinces and Fig.3 shows annual malaria trends from 2015 to 2019. In Chimbu, it can be seen from Fig.1 that malaria decreased from 2007 to 2015 by 80% which is a similar decrease to other highland provinces. However, in Fig.2, in 2019 it can also be seen that Chimbu had an incidence of 18 cases per 1000 population which is one of the lowest incidences of malaria in PNG. Fig. 3 and Fig. 4 show that malaria has remained very low in recent. Fig.4 also shows the malaria incidence reported since 2005 against LLIN distributions. The impact of LLINs in reducing malaria in Chimbu is very apparent after 2005. Reports suggested that distributions started in Chimbu in 2007 but data suggests that they started earlier in 2006. Similar reductions in malaria are apparent after the RAM coordinated programs in 2011 and 2012.

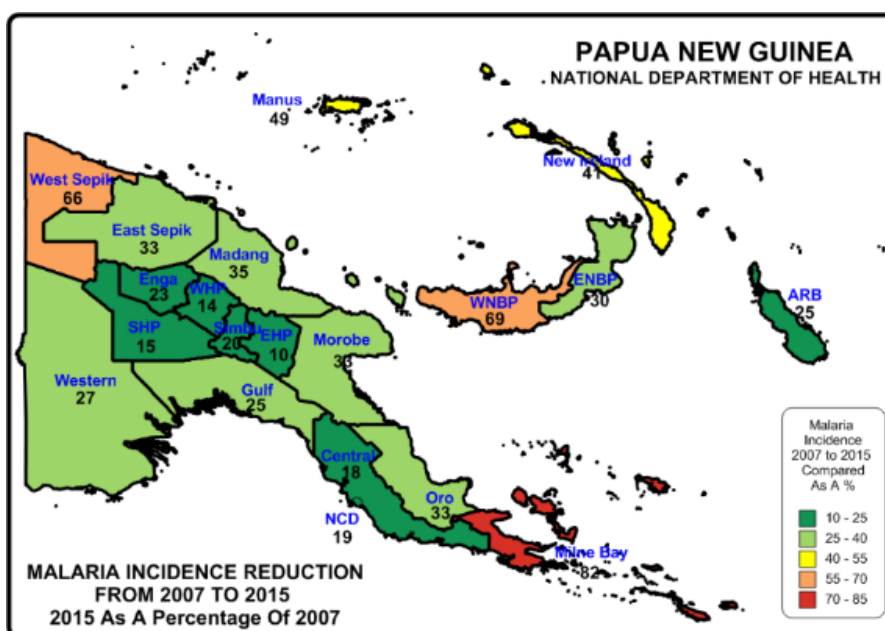


Fig.1 – Relative Reduction Of Malaria In Provinces Of PNG

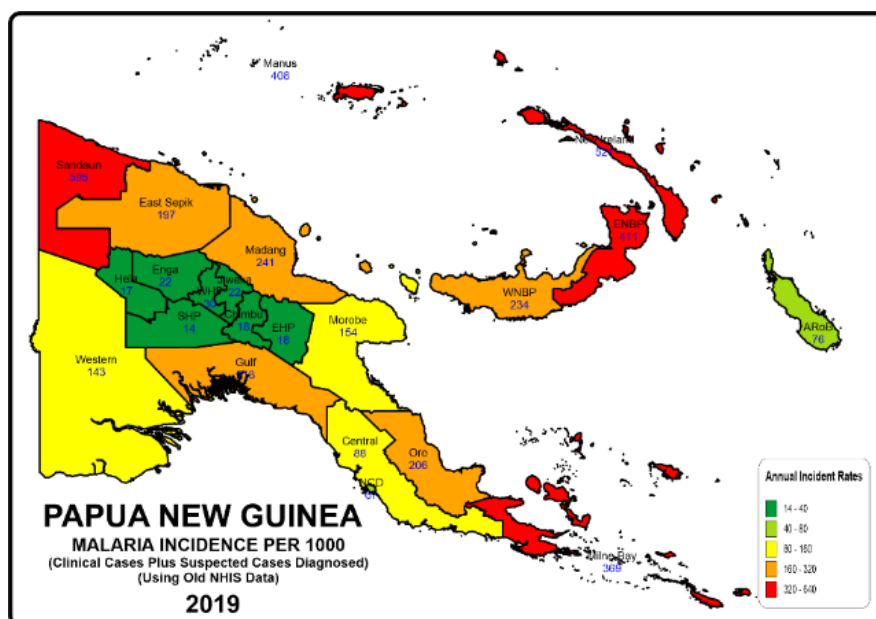


Fig.2 – Reported Malaria Incidence In 2019

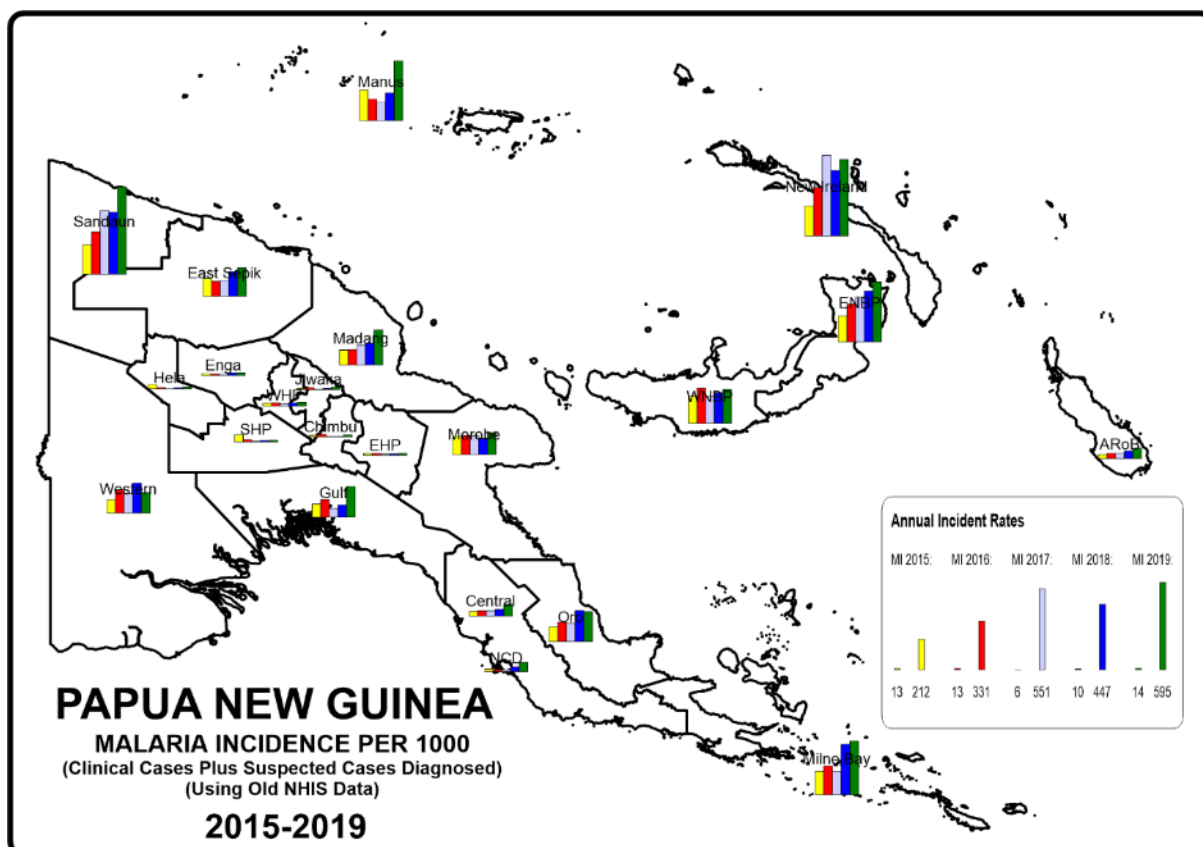


Fig. 3 - Reported Malaria Incidence In PNG From 2015 To 2019

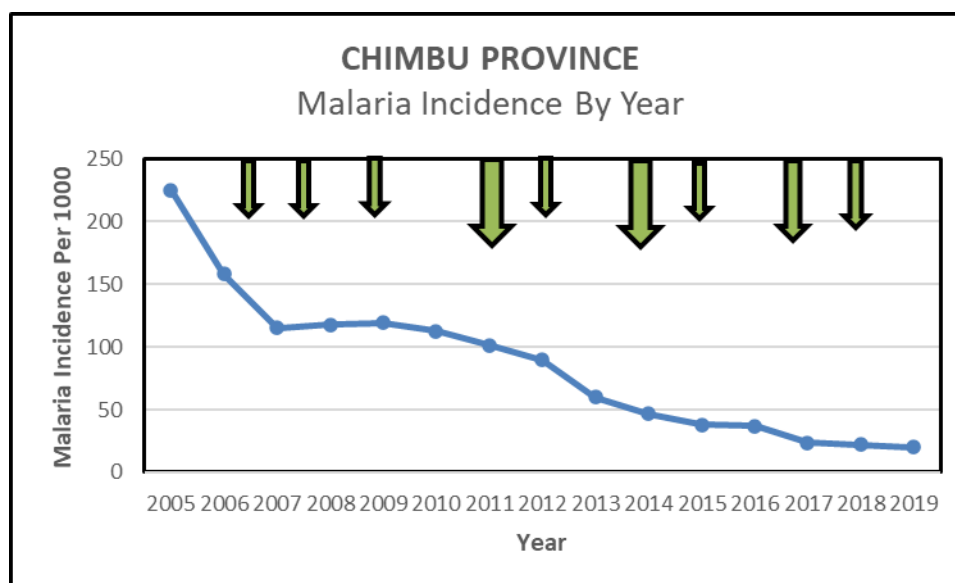


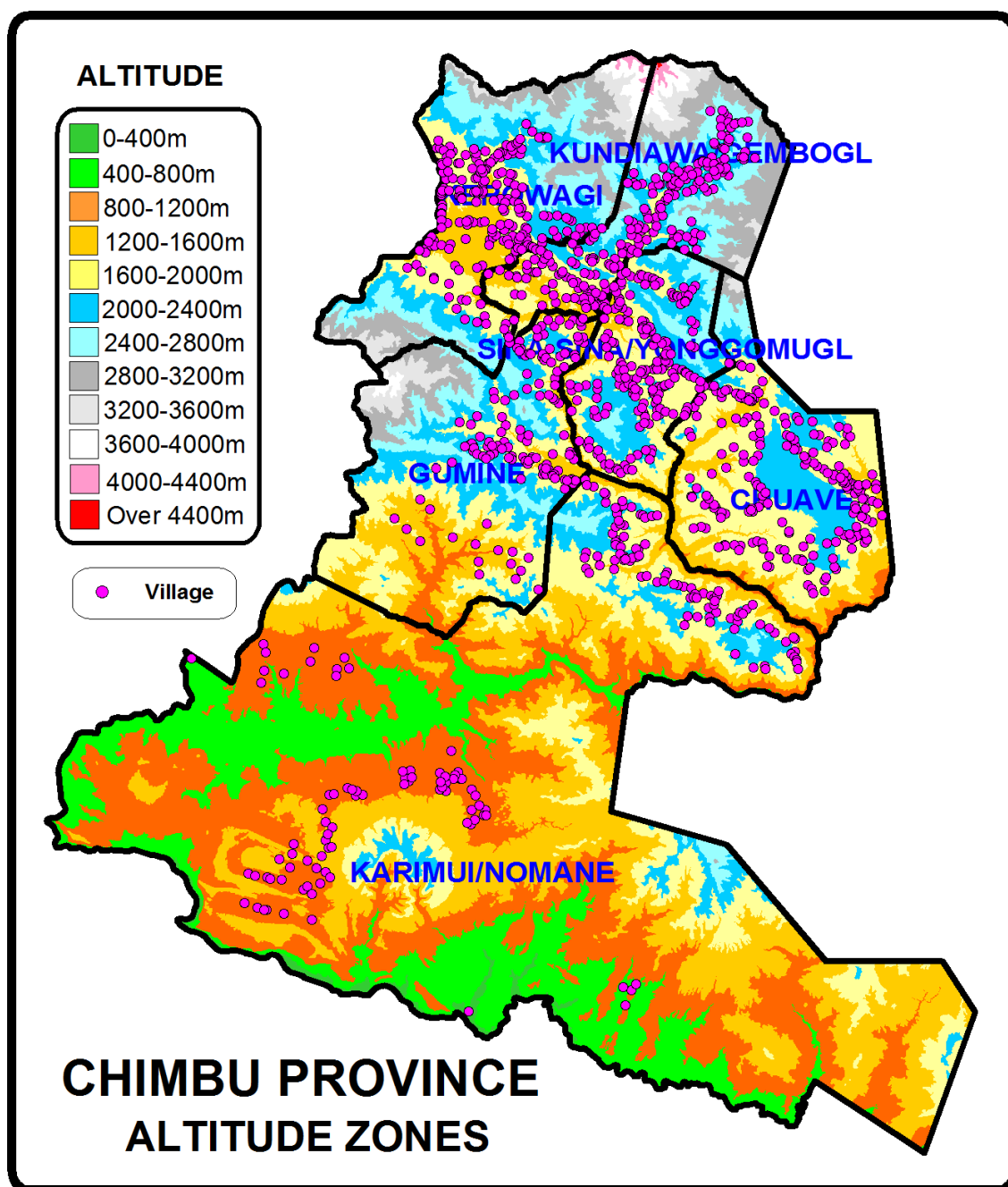
Fig. 4 – Malaria Incidence Versus Distribution Of Nets

(Big arrows represent distributions done in Chauve, Gumine, Karamui Nomane in 2011 and 2014, with smaller arrows showing distribution in Karamui Nomane and Kerowagi in 2007, Chuave and Gumine in 2008 and Sinasina Yongumugl and Kundiawa Gembogl in 2009, 2012 and 2015, Chuave, Karamui and Kerowagi in 2017, and Sina Yongumugl, Kundiawa Gembogl and Gumine in 2018. Gumine was not accessible in 2017. The distributions before 2010 were carried out by Provincial Health Authorities' and the rest were coordinated by RAM and PHA staff together)

Appendix Three - Malaria By Altitude

Chimbu Province is a province in the highlands of mainland Papua New Guinea (PNG). Chimbu Province in general has much of its population living at higher altitudes with only 5.6% of the population living below 1200m where malaria is endemic and these areas are all in Karamui of Karamui Nomane District. On the other extreme, about 20% of the population live in areas above 2000m where malaria is considered absent. The rest of the population live in malaria epidemic areas (19%) and the majority of the population (55%) living in areas which are considered areas of very low malaria transmission of *P.vivax* transmission only. This means that for practical purposes, most of the province has little risk to malaria except those living in Karamui and those living in the Waghi Valley where there is always a risk of epidemics.

Fig. 1 Altitude Zone In Chimbu And Western Highlands Province



Appendix Four – Other Photographs



Distributions In Wangoi



Combined Airplane (Left) And Helicopter (Right) Operation Due To Waterlogged Airstrips In Some Locations



Unloading A Container (Left) And Chinese Nets In Container (Right)

OTHER PICTURES



Car problems In Kilau (Left) And Nogar (Right)

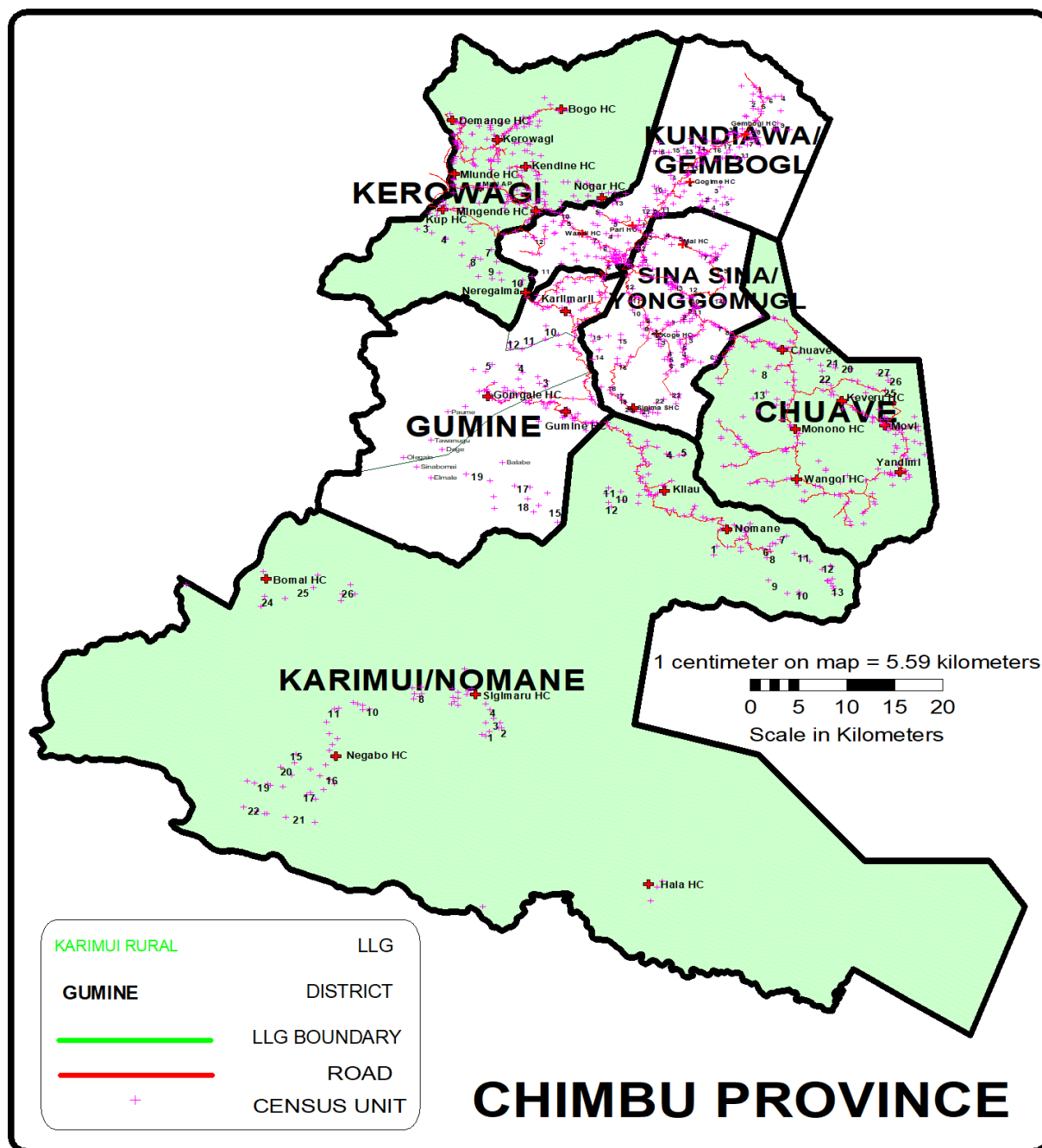


Trekkers In Kilau



Happy Customers In Bogo (Left) And Wangoi (Right)

Appendix Five - Map Of Chimbu Province Showing Census Points Of 2000 Census



ANNEX ONE

CHIMBU PROVINCE
CHUAVE DISTRICT POPULATION 2020
LLIN DISTRIBUTION SUMMARY SHEET

LLG	WARD	VILLAGE	Estimated 2020 Data Based On 2000 Census	Estimated 2020 Data Based On 2017 Data	Health Centre	Population Surveyed	House Holds Surveyed	Nets Issued	Date Of Distribution	Villages	Digicel	Bmobile	Houses With Radios	Radio Networks	Comment
CHUAVE			51,177	51,177		51,383	11,248	25,861		237	227	54	4,014	197	
CHUAVE RURAL			17,000	18,380		18,016	3,719	9,148		54	54	54	2,801	54	
1	SIRIKOGE		857	1,325		1,032	236	540		4	4	4	109		
		Sirikoge	424	596	Chuave HC	427	100	225	17.08.20	1	1	1	47	NBC	Road
		Sirilas	217	135	Chuave HC	207	50	112	17.08.20	1	1	1	21	NBC	Road
		Moi	177	297	Chuave HC	200	43	105	17.08.20	1	1	1	26	NBC	Road
		Sirikoge C/S	38	297	Chuave HC	198	43	98	17.08.20	1	1	1	15	NBC	Road
2	EMEGI		912	557		518	111	258		2	2	2	71		
		Emegi	264	268	Chuave HC	171	36	87	17.08.20	1	1	1	10	NBC	Road
		Morokopu	648	288	Chuave HC	347	75	171	17.08.20	1	1	1	61	NBC	Road
3	MEMBIMANGI		1,258	1,031		1,083	200	524		4	4	4	197		
		Aran	233	245	Chuave HC	253	50	125	13.08.20	1	1	1	50	NBC	Road
		Membimangi	569	226	Chuave HC	301	50	136	13.08.20	1	1	1	47	NBC	Road
		Kiau	319	288	Chuave HC	304	50	148	13.08.20	1	1	1	50	NBC	Road
		Kumul Sda	138	272	Chuave HC	225	50	115	13.08.20	1	1	1	50	NBC	Road
4	TOGOMA		1,921	2,383		2,524	487	1,342		4	4	4	347		
		Togoma	533	443	Chuave HC	655	150	346	13.08.20	1	1	1	134	NBC	Road
		Nubuni	885	1,374	Chuave HC	1,301	232	709	13.08.20	1	1	1	128	NBC	Road
		Mai	136	258	Chuave HC	197	36	92	13.08.20	1	1	1	33	NBC	Road
		Wawi	366	309	Chuave HC	371	69	195	13.08.20	1	1	1	52	NBC	Road
5	AGUGU		1,707	1,875		1,851	403	950		9	9	9	371		
		Agugu Lait Haus	163	101	Chuave HC	164	31	81	14.08.20	1	1	1	29	NBC	Road
		Mangikongo	84	265	Chuave HC	164	28	82	14.08.20	1	1	1	27	NBC	Road
		Mikin	365	327	Chuave HC	174	53	127	14.08.20	1	1	1	50	NBC	Road
		Guaka No 1	451	490	Chuave HC	316	87	160	14.08.20	1	1	1	64	NBC	Road
		Kumogawa	91	134	Chuave HC	165	40	80	14.08.20	1	1	1	40	NBC	Road
		Daun Base	210	194	Chuave HC	235	43	110	14.08.20	1	1	1	40	NBC	Road
		Kuiowo	255	200	Chuave HC	218	47	110	14.08.20	1	1	1	47	NBC	Road
		Agugu Community School	88	165	Chuave HC	92	16	45	14.08.20	1	1	1	16	NBC	Road
		Guaka No 2	NEW		Chuave HC	323	58	155	14.08.20	1	1	1	58	NBC	Road
6	KAUTAMBANDI		1,658	2,315		2,322	426	1,080		6	6	6	228		
		Kautambandi	410	390	Chuave HC	297	51	140	16.08.20	1	1	1	0	NBC	Road
		Kau	237	546	Chuave HC	429	99	262	16.08.20	1	1	1	41	NBC	Road
		Yondumo	451	469	Chuave HC	403	85	209	16.08.20	1	1	1	71	NBC	Road
		Mangiro	560	417	Chuave HC	452	91	227	16.08.20	1	1	1	77	NBC	Road
		Woma		194	Chuave HC	249	50	116	16.08.20	1	1	1	39	NBC	Road
		Kapma		299	Chuave HC	492	50	126	16.08.20	1	1	1	0	NBC	Road
7	MAIMAGU		1,265	785		879	182	443		3	3	3	97		
		Maimagu	525	321	Chuave HC	311	82	163	15.08.20	1	1	1	44	NBC	Road
		Kowimapnom	382	236	Chuave HC	356	50	164	15.08.20	1	1	1	50	NBC	Road
		Kasuo	359	228	Chuave HC	212	50	116	15.08.20	1	1	1	3	NBC	Road
8	GOI		1,481	1,346		1,428	299	745		5	5	5	200		
		Goi	443	379	Chuave HC	441	100	228	15.08.20	1	1	1	44	NBC	Road
		Keikaima	184	220	Chuave HC	157	34	94	15.08.20	1	1	1	32	NBC	Road
		Morei	319	271	Chuave HC	379	83	198	15.08.20	1	1	1	65	NBC	Road
		Damei	346	308	Chuave HC	291	50	146	15.08.20	1	1	1	45	NBC	Road
		Meko	189	168	Chuave HC	160	32	79	15.08.20	1	1	1	14	NBC	Road
9	MAINAMO		1,165	1,123		1,019	204	499		2	2	2	98		
		Mainamo	611	288	Chuave HC	272	54	129	17.08.20	1	1	1	0	NBC	Road
		Yom	553	834	Chuave HC	747	150	370	17.08.20	1	1	1	98	NBC	Road
10	KEU No 1		792	672		557	124	291		2	2	2	107		
		Korowa	302	263	Chuave HC	284	51	140	17.08.20	1	1	1	48	NBC	Road
		Keukopu	489	409	Chuave HC	273	73	151	17.08.20	1	1	1	59	NBC	Road
11	KEU No 2		1,308	1,438		1,412	342	733		3	3	3	310		
		Keu A/P	251	341	Chuave HC	400	109	221	18.08.20	1	1	1	77	NBC	Road
		Subaru	257	147	Chuave HC	120	33	65	18.08.20	1	1	1	33	NBC	Road
		Seven Pawa	800	950	Chuave HC	892	200	447	18.08.20	1	1	1	200	NBC	Road
12	ONOMA		1,102	792		1,153	284	573		4	4	4	263		
		Daima	587	341	Chuave HC	192	49	98	19.08.20	1	1	1	49	NBC	Road
		Onoma	207	232	Chuave HC	337	94	175	19.08.20	1	1	1	77	NBC	Road
		Danei	308	219	Chuave HC	214	50	112	19.08.20	1	1	1	50	NBC	Road
		Muranz	NEW		Chuave HC	410	91	188	19.08.20	1	1	1	87	NBC	Road
13	EIGUN		887	793		524	120	288		2	2	2	110		
		Eigun	582	526	Chuave HC	310	71	182	19.08.20	1	1	1	62	NBC	Road
		Eikibi	305	267	Chuave HC	214	49	106	19.08.20	1	1	1	48	NBC	Road
14	CHUAVE URBAN		687	1,945		1,714	301	882		4	4	4	293		
		Okuk Highway	234	500	Chuave HC	312	60	162	19.08.20	1	1	1	57	NBC	Road
		Wara Mai Road	156	382	Chuave HC	520	100	280	19.08.20	1	1	1	100	NBC	Road
		Di Street Office - Health Centre	204	796	Chuave HC	615	97	317	19.08.20	1	1	1	96	NBC	Road
		Chuavae High School	92	266	Chuave HC	267	44	123	19.08.20	1	1	1	40	NBC	Road
				0											
ELIMBARI RURAL			18,199	15,652		16,800	3,700	8,368		86	79	0	1,202	78	
1	MONONO		872	808		898	272	457		5	5	0	47		
		Mol	301	353	Monono HC	456	139	236	23.08.20	1	1	0	4	NBC Chimb	Road
		Siriri	98	212	Monono HC	156	50	78	23.08.20	1	1	0	13	NBC Chimb	Road
		Geul	143	0	Monono HC	56	15	29	23.08.20	1	1	0	12	NBC Chimb	Road
		Monono	123	243	Monono HC	55	18	28	23.08.20	1	1	0	8	NBC Chimb	Road
		Aregom	207	0	Monono HC	175	50	86	23.08.20	1	1	0	10	NBC Chimb	Road
2	GOGO No 1		614	599		676	168	336		4	3	0	10		

LLG	WARD	VILLAGE	Estimated 2020 Data Based On 2000 Census	Estimated 2020 Data Based On 2017 Data	Health Centre	Population Surveyed	House Holds Surveyed	Nets Issued	Date Of Distribution	Villages	Digicel	Bmobile	Houses With Radios	Radio Networks	Comment
		Daigol	125	173	Monono HC	203	50	102	23.08.20	1	1	0	2	JBC Chimb	Road
		Dai	200	300	Monono HC	342	84	169	23.08.20	1	1	0	5	JBC Chimb	Road
		Gogo	194	0	Monono HC	131	34	65	23.08.20	1	1	0	3	JBC Chimb	Road
		Borai	95	126	Monono HC					1					Included under Wangoi
3	GOGO	No 2	1,251	1,509		1,140	279	592		4	4	0	25		
		Kiruwar	576	727	Monono HC	414	90	232	23.08.20	1	1	0	0	JBC Chimb	Road
		Yopamani	244	302	Monono HC	218	50	108	23.08.20	1	1	0	7	JBC Chimb	Road
		Kapigom	138	121	Monono HC	233	74	116	23.08.20	1	1	0	1	JBC Chimb	Road
		Dirom Community Cntr	294	359	Monono HC	275	65	136	23.08.20	1	1	0	17	JBC Chimb	Road
4	KURAIGURI		1,701	1,572		1,532	274	756		4	4	0	84		
		Manei	614	456	Monono HC	388	100	192	23.08.20	1	1	0	35	JBC Chimb	Road
		Baidigo	331	343	Monono HC	311	74	155	23.08.20	1	1	0	11	JBC Chimb	Road
		Bomai (Dumun)	394	236	Monono HC	415	50	204	23.08.20	1	1	0	25	JBC Chimb	Road
		Wiri Kewa	362	537	Monono HC	418	50	205	23.08.20	1	1	0	13	JBC Chimb	Road
5	KURERI 1		661	834		964	154	475		5	4	0	82		
		Kureri 1	74	186	Monono HC	370	38	182	23.08.20	1	1	0	38	JBC Chimb	Road
		Mareigugal	136	118	Monono HC	224	49	110	23.08.20	1	1	0	0	JBC Chimb	Road
		Wrabako	289	530	Monono HC	315	50	156	23.08.20	1	1	0	44	JBC Chimb	Road
		Beroma	138	0	Monono HC					1					Included under Beroma P/School
		Beroma Primary School	24	0	Monono HC	55	17	27	23.08.20	1	1	0	0	JBC Chimb	Road
6	KURERI 2		882	700		531	114	261		3	3	0	50		
		Banana Block	332	222	Monono HC	195	48	96	23.08.20	1	1	0	27	JBC Chimb	Road
		Kureri 2	220	263	Monono HC	106	16	52	23.08.20	1	1	0	12	JBC Chimb	Road
		Aurabol	331	215	Monono HC	230	50	113	23.08.20	1	1	0	11	JBC Chimb	Road
7	GIRIU No 1		1,087	972		1,093	255	541		5	5	0	43		
		Kogol	224	196	Monono HC	211	37	104	23.08.20	1	1	0	0	JBC Chimb	Road
		Mugul	135	122	Monono HC	147	35	73	23.08.20	1	1	0	1	JBC Chimb	Road
		Miyare	223	217	Monono HC	202	50	100	23.08.20	1	1	0	0	JBC Chimb	Road
		Garden City	397	229	Monono HC	369	89	183	23.08.20	1	1	0	40	JBC Chimb	Road
		Onmai	108	208	Monono HC	164	44	81	23.08.20	1	1	0	2	JBC Chimb	Road
8	GIRIU No 2		1,300	920		1,191	264	582		3	3	0	20		
		Giriu	245	215	Monono HC	315	66	152	25.08.20	1	1	0	0	JBC Chimb	Road
		Mai City	400	394	Monono HC	457	100	224	25.08.20	1	1	0	18	JBC Chimb	Road
		Gunsike	654	311	Monono HC	419	98	206	24.08.20	1	1	0	2	JBC Chimb	Road
9	WANGOI		1,634	960		1,151	274	561		8	8	0	73		
		Wangoi	238	158	Wangoi HC	117	21	57	18.08.20	1	1	0	8	BC CHIMB	Road
		Ganei	291	133	Wangoi HC	126	36	63	18.08.20	1	1	0	10	BC CHIMB	Road
		Auraboi	413	196	Wangoi HC	85	25	43	17.08.20	1	1	0	7	BC CHIMB	Road
		Gamar (Yagari)	602	55	Wangoi HC	126	31	59	17.08.20	1	1	0	3	BC CHIMB	Road
		Wangoi Station	91	87	Wangoi HC	96	19	46	18.08.20	1	1	0	11	BC CHIMB	Road
		Kerasi/Durum		158	Wangoi HC	211	50	108	17.08.20	1	1	0	15	BC CHIMB	Road
		Borai	NEW		Wangoi HC	182	50	89	18.08.20	1	1	0	6	BC CHIMB	Road
		Bariol		173	Wangoi HC	208	42	96	18.08.20	1	1	0	13	BC CHIMB	Road
10	KORORUME No.1		1,529	873		865	160	420		6	5	0	38		
		Korurume	298	199	Wangoi HC	67	19	32	18.08.20	1	1	0	6	BC CHIMB	Most under Guor/Taipari
		Douneri	287	115	Wangoi HC	94	21	45	18.08.20	1	1	0	11	BC CHIMB	Most under Guor/Taipari
		Kurumoi	393	208	Wangoi HC	259	45	129	18.08.20	1	1	0	1	BC CHIMB	Most under Guor/Taipari
		Aivari	187	22	Wangoi HC					1					Included under Guor/Taipari
		Danei	365	208	Wangoi HC	97	22	47	17.08.20	1	1	0	12	BC CHIMB	Most under Guor/Taipari
		Guor/Taipari		121	Wangoi HC	348	53	167	18.08.20	1	1	0	8	BC CHIMB	Road
11	KURURUME		914	1,190		1,173	264	602		7	6	0	93		
		Norome	468	379	Wangoi HC	444	87	224	18.08.20	1	1	0	39	BC CHIMB	Road
		Degidegi	152	203	Wangoi HC	157	34	81	18.08.20	1	1	0	9	BC CHIMB	Road
		Nourei	294	233	Wangoi HC	201	46	104	18.08.20	1	1	0	7	BC CHIMB	Road
		Dirondi (Kamurom)		115	Wangoi HC	134	29	71	17.08.20	1	1	0	20	BC CHIMB	Road
		Onmari		0	Wangoi HC					1				NBC CHIMB	Road: Included under Warfoko
		Warfoko		31	Wangoi HC	176	46	85	18.08.20	1	1	0	13	BC CHIMB	Road
		Gaurei		229	Wangoi HC	61	22	37	18.08.20	1	1	0	5	BC CHIMB	Road
12	YORORI		816	583		614	143	311		4	3	0	80		
		Yorori	318	233	Wangoi HC	225	50	115	14.08.20	1	1	0	25	BC CHIMB	Road
		Dame	61	154	Wangoi HC	206	45	104	14.08.20	1	1	0	24	BC CHIMB	Road
		Kuwe	339	196	Wangoi HC	183	48	92	14.08.20	1	1	0	31	BC CHIMB	Road
		Kuwe Aid Post	98	0	Wangoi HC					1					Not functioning anymore
13	PIMURI No 2		1,365	1,208		1,469	358	766		8	7	0	117		
		Pimuri No.2	558	0	Wangoi HC					1					Broken down below into smaller villages
		Kiruma	315	95	Wangoi HC	125	31	63	14.08.20	1	1	0	11	BC CHIMB	Road: is under ward 12.
		Namadiri	194	168	Wangoi HC	222	50	116	14.08.20	1	1	0	18	BC CHIMB	Road
		Gorokuam/Enn	298	205	Wangoi HC	228	52	120	14.08.20	1	1	0	20	BC CHIMB	Road
		Armoi (7 Days)		277	Wangoi HC	214	49	117	14.08.20	1	1	0	6	BC CHIMB	Road
		Irolmo		202	Wangoi HC	306	84	157	14.08.20	1	1	0	40	BC CHIMB	Road
		Mankou		87	Wangoi HC	152	42	79	14.08.20	1	1	0	12	BC CHIMB	Road
		Aromangi		173	Wangoi HC	222	50	114	14.08.20	1	1	0	10	BC CHIMB	Road
14	OROMA		860	862		1,229	198	607		5	4	0	82		
		Oroma No.1	538	208	Wangoi HC	327	50	164	18.08.20	1	1	0	28	BC CHIMB	Road
		Pei (Megine)	322	213	Wangoi HC	342	50	164	18.08.20	1	1	0	19	BC CHIMB	Road
		Damer		197	Wangoi HC	293	48	147	18.08.20	1	1	0	17	BC CHIMB	Road
		Aikop		202	Wangoi HC	267	50	132	18.08.20	1	1	0	18	BC CHIMB	Road
		Meroukopo		43	Wangoi HC					1					Road: included under Aikop
15	KARAWERI No 1		1,410	1,392		1,475	335	721		10	10	0	199		
		Kaki Beroma	360	192	Wangoi HC	41	10	20	17.08.20	1	1	0	9	BC CHIMB	Road: is under ward 16
		Wekomangi	309	253	Wangoi HC	221	50	111	17.08.20	1	1	0	21	BC CHIMB	Road: is under ward 16.

LLG	WARD	VILLAGE	Estimated 2020 Data Based On 2000 Census	Estimated 2020 Data Based On 2017 Data	Health Centre	Population Surveyed	House Holds Surveyed	Nets Issued	Date Of Distribution	Villages	Digicel	Bmobile	Houses With Radios	Radio Networks	Comment
		Mokoma	417	136	Wangoi HC	99	32	54	17.08.20	1	1	0	11	BC CHIMB	Road
		Morimabunom	306	149	Wangoi HC	146	31	70	17.08.20	1	1	0	18	BC CHIMB	Road
		Karaweri High School	17	242	Wangoi HC	123	28	59	17.08.20	1	1	0	23	BC CHIMB	Road
		Kiam		277	Wangoi HC	203	47	98	17.08.20	1	1	0	47	BC CHIMB	Road
		Biregumen/Kabumul	NEW		Wangoi HC	99	26	48	17.08.20	1	1	0	10	BC CHIMB	Road
		Kaki	NEW		Wangoi HC	133	31	64	17.08.20	1	1	0	23	Nbc Chimbi	Road: is under ward 16
		Karaweri	NEW		Wangoi HC	286	50	137	17.08.20	1	1	0	30	BC CHIMB	Road
		Siegom		144	Wangoi HC	124	30	60	17.08.20	1	1	0	7	BC CHIMB	Road
16	KARAWERI No 2		1,302	669		799	188	380		5	5	0	159		
		Kural	556	187	Wangoi HC	219	50	103	17.08.20	1	1	0	50	BC CHIMB	Road
		Mankamunsuga/Kabuteine	621	286	Wangoi HC	221	50	107	17.08.20	1	1	0	50	BC CHIMB	Road
		Mumerendi	125	196	Wangoi HC	104	25	48	17.08.20	1	1	0	12	BC CHIMB	Road
		Esirei	NEW		Wangoi HC	152	36	71	17.08.20	1	1	0	32	BC CHIMB	Rd/trek
		Mt. Micheal	NEW		Wangoi HC	103	27	51	17.08.20	1	1	0	15	BC CHIMB	Road
				0											
SIANE RURAL			15,979	17,145		16,567	3,829	8,345		97	94	0	11	65	
1	KEREKU		1,013	858		1,094	256	516		4	4	0	0		
		Suakul	477	201	Yandime HC	119	20	57	14.08.20	1	1	0	0		Road
		Esrel	121	296	Yandime HC	340	87	163	14.08.20	1	1	0	0		Road
		Aurabol	404	361	Yandime HC	379	99	173	14.08.20	1	1	0	0		Road
		Sua Community School	11	0	Yandime HC	256	50	123	14.08.20	1	1	0	0		Road
2	WAISIME		1,108	828		847	178	415		3	3	0	0		
		Moimoi 2	345	173	Yandime HC	190	37	92	14.08.20	1	1	0	0		Road/2 Hr Trek
		Almangi	434	246	Yandime HC	271	50	130	14.08.20	1	1	0	0		Road/2 Hr Trek
		Korena	329	409	Yandime HC	386	91	193	14.08.20	1	1	0	0		Road/2 Hr Trek
3	MOREVA No 1		369	461		377	89	181		3	3	0	0		
		Yuna	250	182	Yandime HC	172	45	83	15.08.20	1	1	0	0		Road/2 Hr Trek
		Atino/yandime Community School	119	123	Yandime HC	136	27	65	15.08.20	1	1	0	0		Road/2 Hr Trek
		Atano		155	Yandime HC	69	17	33	15.08.20	1	1	0	0		Road/2 Hr Trek
4	MAREVA		651	673		599	123	291		4	4	0	0		
		Auwamo	133	164	Yandime HC	160	36	77	15.08.20	1	1	0	0		Road
		Akefaro	226	191	Yandime HC	177	42	85	15.08.20	1	1	0	0		Road/2 Hr Trek
		Wingu. 2	192	158	Yandime HC	146	27	70	15.08.20	1	1	0	0		Road
		Komongu	101	161	Yandime HC	116	18	59	15.08.20	1	1	0	0		Road
5	NIME		745	636		563	127	270		4	4	0	0		
		Kiyono	281	160	Yandime HC	144	34	69	16.08.20	1	1	0	0		Road
		M'i-Kunai	177	180	Yandime HC	55	12	26	16.08.20	1	1	0	0		3Hr Trek
		Wingu. 1	240	179	Yandime HC	187	32	90	16.08.20	1	1	0	0		Road
		Nime	47	118	Yandime HC	177	49	85	16.08.20	1	1	0	0		Road
6	FOKOWE		748	612		851	203	402		4	4	0	0		
		Kitiro	309	64	Yandime HC	234	50	106	15.08.20	1	1	0	0		Road
		Kurunga	312	224	Yandime HC	360	84	172	15.08.20	1	1	0	0		Road
		M'i	126	193	Yandime HC	87	19	42	16.08.20	1	1	0	0		2Hr Trek
		Fokowe (Inclusive)		132	Yandime HC	170	50	82	16.08.20	1	1	0	0		2Hr Trek
7	KUMO		367	638		693	148	336		3	3	0	0		
		Waiya	150	218	Yandime HC	256	50	126	16.08.20	1	1	0	0		Previously Movi HC
		New Block	143	209	Yandime HC	235	48	113	16.08.20	1	1	0	0		Previously Movi HC
		Kamaliro	74	211	Yandime HC	202	50	97	16.08.20	1	1	0	0		Previously Movi HC
8	ATINO		450	631		532	137	260		4	4	0	0		
		Nambaiyufa	109	170	Yandime HC	42	12	20	16.08.20	1	1	0	0		Previously Movi HC
		Korou	85	0	Yandime HC	96	25	46	16.08.20	1	1	0	0		Previously Movi HC
		Nambyia	133	231	Yandime HC	321	80	159	16.08.20	1	1	0	0		Previously Movi HC
		Nambaiyufa Community School	122	230	Yandime HC	73	20	35	16.08.20	1	1	0	0		Previously Movi HC
9	IRAFUIUFA		653	922		871	261	469		4	4	0	0		
		Runugu	441	321	Movi HC	330	96	178	22.08.20	1	1	0	0	KBK	Road
		Waikunai	172	0	Movi HC	66	16	33	22.08.20	1	1	0	0	KBK	Road
		Wararam		369	Movi HC	303	99	172	22.08.20	1	1	0	0	KBK	Road
		Koripama/Keto	40	231	Movi HC	172	50	86	22.08.20	1	1	0	0	KBK	Road
10	KOMUNI No 1		630	778		856	194	456		4	4	0	0		
		Ipaku	196	332	Movi HC	305	55	164	22.08.20	1	1	0	0	KBK	Road
		Karand/Nami	87	0	Movi HC	198	50	99	22.08.20	1	1	0	0	KBK	Road
		Lilikapu	258	287	Movi HC	278	68	148	22.08.20	1	1	0	0	KBK	Road
		Afename	89	159	Movi HC	75	21	45	22.08.20	1	1	0	0	KBK	Road
11	FAMUNDI		809	938		857	205	430		6	6	0	0		
		Kiruware	204	130	Movi HC	183	50	92	22.08.20	1	1	0	0	KBK	Road
		Negemo	184	100	Movi HC	97	19	49	22.08.20	1	1	0	0	KBK	Road
		Kauwero/Munga	91	188	Movi HC	175	35	88	22.08.20	1	1	0	0	KBK	Road
		Noinora	74	173	Movi HC	84	26	42	22.08.20	1	1	0	0	KBK	Road
		Inamona	62	130	Movi HC	130	32	65	22.08.20	1	1	0	0	KBK	Road
		Kumendo	193	216	Movi HC	188	43	94	22.08.20	1	1	0	0	KBK	Road
12	SEINE		1,275	1,532		1,496	408	772		10	9	0	0		
		Movi	193	170	Movi HC	179	50	90	22.08.20	1	1	0	0	KBK	Road
		Munga	84	151	Movi HC					1					Included under wd11 Kauwero
		Kilaminga	72	239	Movi HC	228	48	114	22.08.20	1	1	0	0	KBK	Road
		Ofu	150	201	Movi HC	125	50	63	22.08.20	1	1	0	0	KBK	Road
		Landoua	190	192	Movi HC	150	49	75	22.08.20	1	1	0	0	KBK	Road
		New Camp Sda	174	134	Movi HC	193	50	101	22.08.20	1	1	0	0	KBK	Road
		Kainari/Famato	118	201	Movi HC	189	50	107	22.08.20	1	1	0	0	KBK	Road
		Fanaroto	109	0	Movi HC	226	50	118	22.08.20	1	1	0	0	KBK	Road
		Yafano	50	0	Movi HC										Non-Existent
		Kerori	115	106	Movi HC	163	50	81	24.08.20	1	1	0	0	KBK	Road
		Koifafu	20	136	Movi HC	43	11	23	22.08.20	1	1	0	0	KBK	Road
13	RABIUFA		626	1,152		734	170	382		7	6	0	0		
		Rumo	123	189	Movi HC	140	36	75	21.08.20	1	1	0	0	KBK	Road

LLG	WARD	VILLAGE	Estimated 2020 Data Based On 2000 Census	Estimated 2020 Data Based On 2017 Data	Health Centre	Population Surveyed	House Holds Surveyed	Nets Issued	Date Of Distribution	Villages	Digicel	Bmobile	Houses With Radios	Radio Networks	Comment
		Kaso	88	209	Movi HC	89	14	46	21.08.20	1	1	0	0	KBK	Road
		Madairo	122	212	Movi HC	99	24	50	21.08.20	1	1	0	0	KBK	Road
		Honowagi		241	Movi HC	128	32	67	21.08.20	1	1	0	0	KBK	Road
		Rumaro	169	211	Movi HC	175	42	92	21.08.20	1	1	0	0	KBK	Road
		Movi H/C	79	32	Movi HC	103	22	52	21.08.20	1	1	0	0	KBK	Road
		Movi Community School	44	59	Movi HC					1					Included under Movi HC
14	RUMBUIUFA		748	954		741	174	372		6	6	0	0		
		Fomo	140	140	Keveru HC	108	32	54	25.08.20	1	1	0	0	KBK	Previously Movi HC
		Tiribuka	139	0	Keveru HC	76	24	38	25.08.20	1	1	0	0	KBK	Previously Movi HC
		Hap Wara		185	Keveru HC	195	40	98	25.08.20	1	1	0	0	KBK	Previously Movi HC
		Makema	186	177	Keveru HC	56	12	28	25.08.20	1	1	0	0	KBK	Previously Movi HC
		Fuka	213	231	Keveru HC	163	25	82	25.08.20	1	1	0	0	KBK	Previously Movi HC
		Rota Kona	70	220	Keveru HC	143	41	72	25.08.20	1	1	0	0	KBK	Previously Movi HC
15	ANDOMONO		628	672		560	99	287		2	2	0	0		
		Kafarega	172	178	Keveru HC										Non-Existent
		Pila	169	321	Keveru HC	336	49	175	24.08.20	1	1	0	0	KBK	Previously Movi HC
		Kombafairo	288	172	Keveru HC	224	50	112	24.08.20	1	1	0	0	KBK	Previously Movi HC
16	FERAMENA		519	295		430	99	216		3	2	0	0		
		Ofuna	226	206	Keveru HC	217	50	109	23.08.20	1	1	0	0	KBK	Previously Movi HC
		Likene	125	88	Keveru HC	213	49	107	23.08.20	1	1	0	0	KBK	Previously Movi HC
		Keberu	169	0	Keveru HC					1					Included under New Block
17	WAFO		502	598		563	117	282		2	2	0	0		
		Kirau	309	411	Keveru HC	384	73	192	24.08.20	1	1	0	0	KBK	Previously Movi HC
		Morendo	193	187	Keveru HC	179	44	90	24.08.20	1	1	0	0	NA	Previously Movi HC
18	LOFAIFO		365	593		552	112	278		3	3	0	0		
		Yombairaro	209	287	Keveru HC	199	50	100	24.08.20	1	1	0	0	KBK	Previously Movi HC
		Muniyau	91	203	Keveru HC	109	23	56	24.08.20	1	1	0	0	KBK	Previously Movi HC
		New Block	65	102	Keveru HC	244	39	122	24.08.20	1	1	0	0	KBK	Previously Movi HC
19	LOANDI		699	534		693	149	359		4	4	0	0		
		Lende	338	226	Keveru HC	267	48	134	24.08.20	1	1	0	0	NA	Road/ 1 Hr Trek
		Monega	159	139	Keveru HC	149	37	77	24.08.20	1	1	0	0	NA	Road/ 1 Hr Trek
		Fikombaro	153	169	Keveru HC	208	42	111	24.08.20	1	1	0	0	NA	Road/ 1 Hr Trek
		Fikombaro Community School	50	0	Keveru HC	69	22	37	24.08.20	1	1	0	0	NA	Road/ 1 Hr Trek
20	NOMANENA		326	257		215	52	110		2	2	0	5		
		Mainero	193	138	Keveru HC	99	23	52	24.08.20	1	1	0	0	NA	Road
		Blue Sky	133	118	Keveru HC	116	29	58	24.08.20	1	1	0	5	93FM	Road
21	KEMAMI		323	261		249	56	143		2	2	0	3		
		Akoro	169	77	Keveru HC	103	24	57	19.08.20	1	1	0	1	KBK	Road
		Laiya 1	155	184	Keveru HC	146	32	86	19.08.20	1	1	0	2	KBK	Road
22	NOMANE		254	181		223	36	124		2	2	0	3		
		Laiya 2	236	181	Keveru HC	121	21	65	19.08.20	1	1	0	0	KBK	Road
		Nora	18	0	Keveru HC	102	15	59	19.08.20	1	1	0	3	KBK	Road
23	NORIFO		403	336		390	97	196		2	2	0	0		
		Karune	231	210	Keveru HC	185	47	93	21.08.20	1	1	0	0	NA	Road
		Kurumbukotaru	172	127	Keveru HC	205	50	103	21.08.20	1	1	0	0	NA	Road/1Hr Trek
24	KOMBORUFA		531	800		497	107	249		3	3	0	0		
		Omo	194	454	Keveru HC	173	38	87	24.08.20	1	1	0	0	NA	Previously Movi HC
		Hutumoi	206	175	Keveru HC	166	36	83	24.08.20	1	1	0	0	NA	Previously Movi HC
		Ufarutaku/Korome	131	171	Keveru HC	158	33	79	24.08.20	1	1	0	0	NA	Previously Movi HC
25	FOINAWA		394	498		522	116	266		2	2	0	0		
		Kimo	394	393	Movi HC	385	80	191	21.08.20	1	1	0	0	KBK	Road
		Foina		105	Movi HC	137	36	75	21.08.20	1	1	0	0	KBK	Road
26	KOMUNI No 2		454	301		382	70	192		2	2	0	0		
		Ipato	233	125	Movi HC	159	29	80	21.08.20	1	1	0	0	KBK	Road
		Urito	221	177	Movi HC	223	41	112	21.08.20	1	1	0	0	KBK	Road
27	KIFIUFA		389	209		180	46	91		2	2	0	0		
		Opairo	243	209	Movi HC	79	24	40	21.08.20	1	1	0	0	KBK	Road
		Monega	146	0	Movi HC	101	22	51	21.08.20	1	1	0	0	KBK	Road

ANNEX TWO

CHIMBU PROVINCE
 KARIMI NOMANE DISTRICT POPULATION 2020
 LLIN DISTRIBUTION SUMMARY SHEET

LLG	WARD	VILLAGE	Estimated 2020 Data Based On 2000 Census	Estimated 2020 Data Based On 2017 Data	Health Centre	Population Surveyed	House Holds Surveyed	Nets Issued	Date Of Distribution	Villages	Digicel	Bmobile	Houses With Radios	Radio Networks	Comment
KARIMUI 1 NOMANE			59,016	59,016		56,599	10,474	28,837		200	186	27	1,589	191	
KARIMUI RURAL			27,392	31,949		31,460	5,362	15,978		97	83	0	137	88	
1	YURO 1		2,172	2,470		2,512	407	1,257		3	3	0	1		
		Naiyo 2 (Yuro)	890	958	Sigamuru HC	1,043	173	523	03.08.20	1	1	0	1	Radio Light	3 Hr Trek
		Naiyo 1	417	395	Sigamuru HC	440	81	220	03.08.20	1	1	0	0	Radio Light	3 Hr Trek
		Yawiyo	864	1,118	Sigamuru HC	1,029	153	514	03.08.20	1	1	0	0	Radio Light	3 Hr Trek
2	YURO 2		1,295	1,793		1,617	265	809		3	3	0	3		
		Sogo 2	411	474	Sigamuru HC	434	67	217	03.08.20	1	1	0	0	Radio Light	3 Hr Trek
		Moiyo	387	655	Sigamuru HC	547	98	274	03.08.20	1	1	0	0	Radio Light	3 Hr Trek
		Hoiyayo	497	665	Sigamuru HC	636	100	318	03.08.20	1	1	0	3	Radio Light	3 Hr Trek
3	HUWAIYO		1,153	1,403		1,519	267	763		2	2	0	5		
		Waiyo	544	646	Sigamuru HC	650	100	326	03.08.20	1	1	0	1	Radio Light	2.5 Hr Trek
		Wenaiyo	609	757	Sigamuru HC	869	167	437	03.08.20	1	1	0	4	Radio Light	2.5 Hr Trek
4	WARIO		1,597	2,022		1,738	304	866		6	6	0	26		
		Kiasivi (Wario)	317	579	Sigamuru HC	462	80	230	03.08.20	1	1	0	11	Radio Light	1hr walk
		Sebelisivi	417	474	Sigamuru HC	391	68	195	03.08.20	1	1	0	2	Radio Light	1hr walk
		Sororasivi	403	546	Sigamuru HC	491	75	245	03.08.20	1	1	0	2	Radio Light	1hr walk
		Magiagi Block	304	257	Sigamuru HC	208	45	104	03.08.20	1	1	0	7	Radio Light	20 Min Walk
		Kerepa Community School	55	167	Sigamuru HC	81	14	40	03.08.20	1	1	0	2	Radio Light	10 Min Walk
		Sigimaru H/Cen	101	0	Sigamuru HC	105	22	52	03.08.20	1	1	0	2	Radio Light	
5	KARIMUI STATION 1		905	1,329		1,261	247	1,040		3	3	0	24		
		Meiyo	434	541	Sigamuru HC	665	150	381	03.08.20	1	1	0	8	Radio Light	1hr Min Walk
		Solida	184	283	Sigamuru HC	309	48	515	03.08.20	1	1	0	2	Radio Light	1hr 10minutes Walk
		Karimui Station	287	506	Sigamuru HC	287	49	144	03.08.20	1	1	0	14	Radio Light	20 Min Walk
6	KARIMUI STATION 2		1,475	1,703		1,830	305	911		5	5	0	24		
		Peria (Karimui)	255	393	Sigamuru HC	229	50	115	03.08.20	1	1	0	2	Radio Light	1hr walk
		Wegisivi	307	324	Sigamuru HC	393	72	197	03.08.20	1	1	0	1	Radio Light	1hr Walk
		Orokamaru	141	182	Sigamuru HC	255	50	128	03.08.20	1	1	0	0	Radio Light	2hrs walk
		Tobaiyakoma	385	291	Sigamuru HC	337	49	168	03.08.20	1	1	0	5	Radio Light	50 Min Walk
		Kagosili	387	514	Sigamuru HC	616	84	303	03.08.20	1	1	0	16	Radio Light	2hrs walk
7	NOROWAI		802	974		868	150	434		3	3	0	1		
		Norwai	247	289	Sigamuru HC	263	50	132	03.08.20	1	1	0	0	Radio Light	1hr walk
		Kiribari	309	346	Sigamuru HC	276	50	138	03.08.20	1	1	0	1	Radio Light	1hr walk
		Kurube	247	338	Sigamuru HC	329	50	164	03.08.20	1	1	0	0	Radio Light	1hr walk
8	BOISAMARU 1		1,054	1,141		1,125	197	564		5	5	0	4		
		Boisamaru	224	250	Sigamuru HC	211	38	106	04.08.20	1	1	0	0	Radio Light	2hrs 30minutes trekk
		Kepanisivi	184	0	Sigamuru HC	183	28	92	04.08.20	1	1	0	0	Radio Light	2hrs 30minutes trekk
		Walaisivi	211	346	Sigamuru HC	182	32	91	04.08.20	1	1	0	0	Radio Light	2hrs 30minutes trekk
		Tiosibi	427	205	Sigamuru HC	266	49	133	04.08.20	1	1	0	3	Radio Light	2hrs 30minutes trekk
		Boisamaru Community Sch	8	340	Sigamuru HC	283	50	142	04.08.20	1	1	0	1	Radio Light	2hrs 30minutes trekk
9	BOISAMARU 2		481	707		751	129	375		1	1	0	5		
		Soboro	481	707	Sigamuru HC	751	129	375	04.08.20	1	1	0	5	Radio Light	3 Hr Trek
10	YOGOROMARU		994	1,350		1,203	194	540		5	5	0	0		
		Yogoromaru	400	384	Negabo HC	240	38	116	05.08.20	1	1	0	0	RADIO SIMBU	3 Hr Trek
		Asanugai	54	442	Negabo HC	479	64	191	05.08.20	1	1	0	0	RADIO SIMBU	3 Hr Trek
		Todaya	333	325	Negabo HC	104	21	48	05.08.20	1	1	0	0	RADIO SIMBU	3 Hr Trek
		Bunibiri	161	156	Negabo HC	188	34	92	05.08.20	1	1	0	0	RADIO SIMBU	3 Hr Trek
		Yogoromaru Community Sc	47	43	Negabo HC	192	37	93	05.08.20	1	1	0	0	RADIO SIMBU	3 Hr Trek
11	DIBE 1		720	1,038		1,151	185	560		3	3	0	0		
		Dibe	279	674	Negabo HC	612	90	281	05.08.20	1	1	0	0	RADIO SIMBU	3 Hr Trek
		Sogo 1	180	251	Negabo HC	234	45	124	05.08.20	1	1	0	0	RADIO SIMBU	3 Hr Trek
		Irage	260	113	Negabo HC	305	50	155	05.08.20	1	1	0	0	RADIO SIMBU	3 Hr Trek
12	DIBE 2		471	445		518	92	243		1	1	0	0		
		Sogo 2	471	445	Negabo HC	518	92	243	05.08.20	1	1	0	0	RADIO SIMBU	3 Hr Trek
13	NEGABO		1,329	1,470		1,554	335	834		5	4	0	0		
		Negabo	476	442	Negabo HC	655	137	381	07.08.20	1	1	0	0	RADIO SIMBU	15 minutes Trek
		Yogobo 1&2	257	278	Negabo HC	229	48	118	07.08.20	1	1	0	0	RADIO SIMBU	15 minutes Trek
		Beiye	354	452	Negabo HC	435	100	215	07.08.20	1	1	0	0	RADIO SIMBU	40 minutes Trek
		Tomobisibi	221	170	Negabo HC	235	50	120	07.08.20	1	1	0	0	RADIO SIMBU	10 minutes Trek
		Negabo H/Cen	21	128	Negabo HC					1					Included under Negabo Village
14	TUA 1		443	485		572	100	281		1	1	0	0		
		Tua	443	485	Negabo HC	572	100	281	07.08.20	1	1	0	0	RADIO SIMBU	1 hour Trek
15	TUA 2 (TILIGE)		1,077	1,079		1,046	182	518		2	2	0	0		
		Tilige	594	539	Negabo HC	467	91	234	06.08.20	1	1	0	0	RADIO SIMBU	2 hours Trek
		Bobo	482	541	Negabo HC	579	91	284	06.08.20	1	1	0	0	RADIO SIMBU	15 minutes Trek
16	MASI		1,142	1,123		851	145	421		4	4	0	0		
		Maina	508	334	Negabo HC	239	47	122	06.08.20	1	1	0	0	RADIO SIMBU	3 Hr Trek
		Walaisivi	182	266	Negabo HC	212	37	103	06.08.20	1	1	0	0	RADIO SIMBU	3 Hr Trek
		Okanoma	452	258	Negabo HC	212	33	102	06.08.20	1	1	0	0	RADIO SIMBU	3 Hr Trek
		Haseka		265	Negabo HC	188	28	94	06.08.20	1	1	0	0	RADIO SIMBU	3 Hr Trek
17	MAINA 1		882	827		771	167	370		4	4	0	0		
		Masi	320	347	Negabo HC	378	86	181	06.08.20	1	1	0	0	RADIO SIMBU	3 Hr Trek
		Saiya	200	285	Negabo HC	164	28	73	06.08.20	1	1	0	0	RADIO SIMBU	3 Hr 30 min Trek
		Anobai	153	121	Negabo HC	119	34	61	06.08.20	1	1	0	0	RADIO SIMBU	3 Hr 30 min Trek
		Noruasiwi	210	73	Negabo HC	110	19	55	06.08.20	1	1	0	0	RADIO SIMBU	3 Hr 30 min Trek
18	MAINA 2		737	507		432	78	191		1	1	0	0		
		Hoyaisivi	737	507	Negabo HC	432	78	191	06.08.20	1	1	0	0	RADIO SIMBU	4 Hr Trek
19	SOLARI (NORU)		1,610	1,457		1,793	259	891		5	5	0	0		
		Tomobirisibi	323	557	Negabo HC	622	84	356	06.08.20	1	1	0	0	RADIO SIMBU	6 Hr Trek

LLG	WARD	VILLAGE	Estimated 2020 Data Based On 2000 Census	Estimated 2020 Data Based On 2017 Data	Health Centre	Population Surveyed	House Holds Surveyed	Nets Issued	Date Of Distribution	Villages	Digicel	Bmobile	Houses With Radios	Radio Networks	Comment
8	DAMA		401	395		422	81	211		1	1	0	8		
		Gerema	401	395	Nomane HC	422	81	211	15.08.20	1	1	0	8	FM	2 Hr Trek
9	HOPUM		456	431		425	74	213		2	2	0	1		
		Homane Ounum	216	260	Nomane HC	242	34	121	15.08.20	1	1	0	1	FM	2 Hr Trek
		Obum	240	171	Nomane HC	183	40	92	15.08.20	1	1	0	0	FM	2 Hr Trek
10	YUWAI		338	317		453	75	227		2	2	0	27		
		Mariox	148	149	Nomane HC	229	37	115	15.08.20	1	1	0	12	FM	Road
		Yuwai	190	168	Nomane HC	224	38	112	15.08.20	1	1	0	15	FM	Road
11	APURI		906	855		809	138	406		3	3	0	15		
		Kabre	435	423	Nomane HC	378	62	190	14.08.20	1	1	0	8	FM	Road
		Wahongo	166	188	Nomane HC	165	31	83	14.08.20	1	1	0	1	FM	Road
		Waula	305	244	Nomane HC	266	45	133	14.08.20	1	1	0	6	FM	Road
12	KUKAMA		611	713		634	137	319		4	4	0	18		
		Kiari Community School	19	201	Nomane HC	49	10	25	16.08.20	1	1	0	4	FM	Road
		Kunol	249	239	Nomane HC	265	49	133	15.08.20	1	1	0	1	FM	Road
		Mau	154	112	Nomane HC	185	48	93	16.08.20	1	1	0	12	FM	Road
		Yunoho	188	162	Nomane HC	135	30	68	15.08.20	1	1	0	1	FM	Road
13	KALEM		1,433	1,297		1,290	237	644		6	6	0	23		
		Kukuma	300	289	Nomane HC	328	50	164	16.08.20	1	1	0	15	FM	Road / 1 Hr Trek
		Muragoi	326	219	Nomane HC	184	39	92	16.08.20	1	1	0	1	FM	Road / 1 Hr Trek
		Aburi	313	267	Nomane HC	238	45	119	16.08.20	1	1	0	3	FM	Road / 1 Hr Trek
		Muneri	330	228	Nomane HC	225	46	112	15.08.20	1	1	0	3	FM	Road / 1 Hr Trek
		Las Wara	106	232	Nomane HC	176	32	88	16.08.20	1	1	0	1	FM	Road / 1 Hr Trek
		Owaiho	57	62	Nomane HC	139	25	69	16.08.20	1	1	0	0	FM	Road / 1 Hr Trek
				0											
SALT RURAL			20,731	18,110		16,420	3,428	8,479		57	57	27	1,232	57	
1	BANEWERA		1,264	1,010		695	148	373		3	3	1	65		
		Ameri	287	384	Kilau HC	201	41	107	20.07.20	1	1	0	3	NBC	Road
		Baniwera	320	248	Kilau HC	303	58	159	20.07.20	1	1	0	36	NBC	Road
		Hanbai (Mangi)	656	378	Kilau HC	191	49	107	20.07.20	1	1	1	26	NBC	Road
2	SUA (YAULO)		2,839	646		662	137	331		2	2	1	29		
		Yobaboli	530	352	Kilau HC	365	71	184	21.07.20	1	1	1	0	NBC	Road
		Suabegil	313	294	Kilau HC	297	66	147	21.07.20	1	1	0	29	NBC	Road
		Deri/Sua	523	0	Kilau HC										Same as in Ward 24
		Mirima	989	0	Kilau HC										Same as in Ward 24
		Bosla	484	0	Kilau HC										Same as in Ward 24
3	DIRIMA		1,246	1,397		1,225	264	628		4	4	4	0		
		Aregigi	214	169	Kilau HC	119	27	60	21.07.20	1	1	1	0	NBC	Road
		Dirima 2	575	313	Kilau HC	305	71	157	21.07.20	1	1	1	0	NBC	Road
		Doliba High School	15	337	Kilau HC	341	66	178	21.07.20	1	1	1	0	NBC	Road
		Moma	442	579	Kilau HC	460	100	233	21.07.20	1	1	1	0	NBC	Road
4	DIANI		929	714		548	126	288		2	2	2	60		
		Diani	460	338	Kilau HC	282	64	147	21.07.20	1	1	1	42	NBC	Road
		Yobai	469	376	Kilau HC	266	62	141	21.07.20	1	1	1	18	NBC	Road
5	GOROBA		497	512		545	100	276		2	2	1	2		
		Baibai	203	230	Kilau HC	261	50	142	21.07.20	1	1	1	2	NBC	Road
		Goroba	294	281	Kilau HC	284	50	134	21.07.20	1	1	0	0	NBC	Road
6	AINABANE		856	596		688	149	363		2	2	0	53		
		Bogahulalua (Bogaikul)	387	344	Kilau HC	400	80	206	21.07.20	1	1	0	39	NBC	Road
		Hamanedimane	469	252	Kilau HC	288	69	157	21.07.20	1	1	0	14	NBC	Road
7	PERUI		638	574		504	116	262		2	2	0	0		
		Ainabane	140	149	Kilau HC	157	36	84	21.07.20	1	1	0	0	NBC	Road
		Perui	499	425	Kilau HC	347	80	178	21.07.20	1	1	0	0	NBC	Road
8	YOPAKENI		885	433		408	91	210		1	1	1	33		
		Gomiri	885	433	Kilau HC	408	91	210	21.07.20	1	1	1	33	NBC	Road
9	YOPAERI		1,498	1,428		1,162	245	584		3	3	3	95		
		Oinima	586	499	Kilau HC	415	97	206	21.07.20	1	1	1	51	NBC	Road
		Simninil	581	531	Kilau HC	559	99	278	21.07.20	1	1	1	24	NBC	Road
		Yobaeri	330	398	Kilau HC	188	49	100	21.07.20	1	1	1	20	NBC	Road
10	MOGIAGI		393	532		537	128	285		2	2	1	27		
		Kenamaina (Kul)	138	195	Kilau HC	200	47	105	19.07.20	1	1	0	0	NBC	Trek
		Minaguri	255	337	Kilau HC	337	81	180	19.07.20	1	1	1	27	NBC	Trek
11	MORINIL \ KORI		588	669		693	144	358		3	3	1	27		
		Brokul	208	280	Kilau HC	337	68	175	19.07.20	1	1	0	15	NBC	Road / 1 Hr Trek
		Morikama	112	204	Kilau HC	231	50	118	19.07.20	1	1	1	2	NBC	Road / 1 Hr Trek
		Morinil Kol	268	185	Kilau HC	125	26	65	19.07.20	1	1	0	10	NBC	Road / 1 Hr Trek
12	YOPAKUL		187	285		376	67	191		2	2	0	56		
		Munikobale	89	159	Kilau HC	209	38	108	19.07.20	1	1	0	35	NBC	Road / 1 Hr Trek
		Yopakul	97	125	Kilau HC	167	29	83	19.07.20	1	1	0	21	NBC	Road / 1 Hr Trek
13	WAIDO		622	719		560	108	288		2	2	2	56		
		Yobabolisi (Mini)	237	260	Kilau HC	113	31	55	20.07.20	1	1	1	14	NBC	Road
		Yolawaido	385	460	Kilau HC	447	77	233	20.07.20	1	1	1	42	NBC	Road
14	TAPAEKUL		518	506		432	94	223		2	2	0	63		
		Nimegula	223	215	Kilau HC	195	45	102	20.07.20	1	1	0	15	NBC	Road
		Tabaikul	296	291	Kilau HC	237	49	121	20.07.20	1	1	0	48	NBC	Road
15	KOBIE BALAMIL		388	549		710	143	363		1	1	1	112		
		Koblobalanil	388	549	Kilau HC	710	143	363	20.07.20	1	1	1	112	NBC	Road
16	TAPAI		1,156	1,096		1,122	219	585		5	5	2	46		
		Gigebemalgi	135	154	Kilau HC	241	45	125	20.07.20	1	1	0	7	NBC	Road
		Tabai (Molalva)	213	167	Kilau HC	165	35	90	20.07.20	1	1	1	19	NBC	Road
		Humbaba	224	266	Kilau HC	134	30	70	20.07.20	1	1	0	15	NBC	Road
		Beregule	255	172	Kilau HC	256	48	131	20.07.20	1	1	0	5	NBC	Road
		Kabnibani	330	337	Kilau HC	326	61	169	20.07.20	1	1	1	0	NBC	Road
17	YURIBOL		906	883		729	146	375		3	3	0	74		
		Yuribol	411	441	Kilau HC	294	55	152	20.07.20	1	1	0	30	NBC	Road
		Saina/Town Gan	419	384	Kilau HC	315	68	162	20.07.20	1	1	0	27	NBC	Road

LLG	WARD	VILLAGE	Estimated 2020 Data Based On 2000 Census	Estimated 2020 Data Based On 2017 Data	Health Centre	Population Surveyed	House Holds Surveyed	Nets Issued	Date Of Distribution	Villages	Digicel	Bmobile	Houses With Radios	Radio Networks	Comment
		Kilau Station	76	58	Kilau HC	120	23	61	20.07.20	1	1	0	17	NBC	Road
18	MIRIMA		658	489		437	90	223		2	2	1	41		
		Erema	395	237	Kilau HC	217	42	113	20.07.20	1	1	1	11	NBC	Road
		Moma (Mirima)	263	252	Kilau HC	220	48	110	20.07.20	1	1	0	30	NBC	Road
19	BORI		609	462		374	65	190		2	2	2	2		
		Bori/Pulma	253	206	Kilau HC	237	43	118	20.07.20	1	1	1	0	NBC	Road
		Bri/Yorihul	356	255	Kilau HC	137	22	72	20.07.20	1	1	1	2	NBC	Road
20	MULUGRA		382	372		359	87	187		2	2	2	19		
		Nilnere	278	144	Kilau HC	162	37	85	20.07.20	1	1	1	7	NBC	Road
		Murugra	104	228	Kilau HC	197	50	102	20.07.20	1	1	1	12	NBC	Road
21	MANKON		661	551		548	101	285		2	2	2	0		
		Mankon	400	399	Kilau HC	265	51	141	20.07.20	1	1	1	0	NBC	Road
		Dulai	262	152	Kilau HC	283	50	144	20.07.20	1	1	1	0	NBC	Road
22	KAMA		1,535	1,143		937	193	483		2	2	0	116		
		Olwi	796	563	Kilau HC	497	100	260	21.07.20	1	1	0	72	NBC	Road
		Kama	739	580	Kilau HC	440	93	223	21.07.20	1	1	0	44	NBC	Road
23	GAIMA		1,475	679		723	188	380		2	2	0	92		
		Gaima Dawa	549	679	Kilau HC	511	138	269	21.07.20	1	1	0	69	NBC	Road
		Mainkuri	926	0	Kilau HC	212	50	111	21.07.20	1	1	0	23	NBC	Road
24	DERI			1,866		1,446	279	748		4	4	0	164		
		Deri/Sua		630	Kilau HC	712	125	369	22.07.20	1	1	0	71	NBC	Road
		Mirima		539	Kilau HC	299	54	150	22.07.20	1	1	0	41	NBC	Road
		Bosla		475	Kilau HC	239	62	129	22.07.20	1	1	0	28	NBC	Road
		Omhole		222	Kilau HC	196	38	100	22.07.20	1	1	0	24	NBC	Road

ANNEX THREE

CHIMBU PROVINCE KEROWAGI DISTRICT POPULATION 2020 LLIN DISTRIBUTION SUMMARY SHEET

LLG	WARD	VILLAGE	Estimated 2020 Data Based On 2000 Census	Estimated 2020 Data Based On 2017 Data	Health Centre	Population Surveyed	House Holds Surveyed	Nets Issued	Date Of Distribution	Villages	Digicel	Bmobile	Houses With Radios	Radio Networks	Comment
KEROWAGI			104,354	104,354		114,059	20,129	55,578		241	239	105	5,561	239	
GENA \ WAUGLA RURAL			30,060	31,424		34,669	6,302	17,590		88	88	37	1,847	88	
1	NOGAR		1,216	1,275		1,164	218	587		4	4	0	32		
		Nogar	164	202	Nogar HC	220	34	110	13.07.20	1	1	0	2	NBC & FM	30 Mins
		Kamanigle	344	545	Nogar HC	322	65	168	13.07.20	1	1	0	0	NBC & FM	1 Hr 30 Mins
		Talange	392	215	Nogar HC	227	48	113	13.07.20	1	1	0	5	NBC & FM	30 Mins
		Ira	316	313	Nogar HC	395	71	196	13.07.20	1	1	0	25	NBC & FM	2 Hrs 30 Mins
2	MUKUNA		755	696		737	149	367		4	4	0	26		
		Welakumar	215	90	Nogar HC	155	32	79	13.07.20	1	1	0	9	NBC & FM	1 Hour
		Mukana	221	178	Nogar HC	188	38	90	13.07.20	1	1	0	1	NBC & FM	1 Hour
		Baglkagl	173	262	Nogar HC	260	47	128	13.07.20	1	1	0	14	NBC & FM	2 Hour
		Wagla	146	166	Nogar HC	134	32	70	13.07.20	1	1	0	2	NBC & FM	1 Hrs 30 Mins
3	BOMBIR		1,155	981		644	132	329		3	3	0	14		
		Bombir	371	565	Nogar HC	417	80	211	13.07.20	1	1	0	6	NBC & FM	2 Hrs
		Noglai Nigle	367	221	Nogar HC	109	27	62	13.07.20	1	1	0	6	NBC & FM	1 Hrs 30 Mins
		Kura Oito	417	195	Nogar HC	118	25	56	13.07.20	1	1	0	2	NBC & FM	2 Hrs
4	KENDINE		2,831	2,421		3,481	652	1,698		9	9	0	0		
		Kendine	257	283	Kendine HC	575	100	282	20.07.20	1	1	0	0	FM	5mins by Road
		Kamataru	169	177	Kendine HC	131	22	64	20.07.20	1	1	0	0	FM	4Hrs Road/Trek
		Binagl	592	359	Kendine HC	652	132	322	20.07.20	1	1	0	0	FM	10mins by Road
		Sie Mogl	799	710	Kendine HC	742	150	365	20.07.20	1	1	0	0	FM	2Hrs By Road/Trek
		Bogl Nigle	158	114	Kendine HC	110	20	52	20.07.20	1	1	0	0	FM	5Hrs by Road/Trek
		Dan Nigle	384	325	Kendine HC	507	78	245	20.07.20	1	1	0	0	FM	2Hrs By Road/Trek
		Burba	257	268	Kendine HC	294	50	144	20.07.20	1	1	0	0	FM	2Hrs, 40 mins by Road/Trek
		Kendine H/C	215	186	Kendine HC	201	50	97	20.07.20	1	1	0	0	FM	2mins by Road
		Alglura	NEW		Kendine HC	269	50	127	20.07.20	1	1	0	0	FM	15mins by Road
5	KAMBANG		1,573	1,374		2,025	400	1,004		5	5	0	0		
		Kambage	415	428	Kendine HC	196	47	96	20.07.20	1	1	0	0	FM	2mins by Road
		Bagle	339	268	Kendine HC	413	84	212	20.07.20	1	1	0	0	FM	45mins by Road
		Ganbugl	791	646	Kendine HC	998	195	497	20.07.20	1	1	0	0	FM	15mins by Road
		Bagle C/S	29	32	Kendine HC	140	24	66	20.07.20	1	1	0	0	FM	45mins by Road
		Kerange	NEW		Kendine HC	278	50	133	20.07.20	1	1	0	0	FM	30mins by Road
6	SIM		2,894	2,543		4,096	723	1,992		7	7	0	0		
		Sim	223	221	Kendine HC	603	100	287	21.07.20	1	1	0	0	FM	10mins by Road
		Urmand	310	131	Kendine HC	261	50	125	21.07.20	1	1	0	0	FM	5mins by Road
		Gagl	481	436	Kendine HC	570	101	278	21.07.20	1	1	0	0	FM	40mins by Road
		Uka	1,157	801	Kendine HC	835	143	404	21.07.20	1	1	0	0	FM	2mins by Road
		Siur	723	953	Kendine HC	988	182	490	21.07.20	1	1	0	0	FM	1Hour by Road
		Pokobuko	NEW		Kendine HC	570	97	278	21.07.20	1	1	0	0	FM	35mins by Road
		Kundur	NEW		Kendine HC	269	50	130	21.07.20	1	1	0	0	FM	30mins by Road
7	DIMBINYAUNDO		3,955	4,107		3,872	556	2,092		8	8	8	432		
		Dibindiyaudo	782	744	Mingende H	648	71	346	16.07.20	1	1	1	71	NBC-Simbu	Road
		Kurumbayu	637	436	Mingende H	579	95	291	16.07.20	1	1	1	95	NBC-Simbu	Road
		Kaman	291	377	Mingende H	216	31	128	15.07.20	1	1	1	64	NBC-Simbu	Road
		Yaglmugl	620	615	Mingende H	765	51	405	15.07.20	1	1	1		NBC-Simbu	Road
		Yagle	413	355	Mingende H	408	61	221	14.07.20	1	1	1	61	NBC-Simbu	Road
		Karmel	274	262	Mingende H	172	20	100	14.07.20	1	1	1	20	NBC-Simbu	Road
		Diugl	527	692	Mingende H	543	106	298	21.07.20	1	1	1	0	NBC-Simbu	Road
		Gever Kurba	411	626	Mingende H	541	121	303	16.07.20	1	1	1	121	NBC-Simbu	Road
8	DUGLGAMBUGL		3,097	3,959		4,836	807	2,480		10	10	10	614		
		Duglgambagl	428	558	Mingende H	527	72	273	23.07.20	1	1	1	72	NBC-Simbu	Road
		Kenigle	306	485	Mingende H	591	100	308	23.07.20	1	1	1	72	NBC-Simbu	Road
		Kutn	478	514	Mingende H	520	59	235	14.07.20	1	1	1	47	NBC-Simbu	Road
		Kumbu	308	394	Mingende H	588	94	287	17.07.20	1	1	1	3	NBC-Simbu	Road
		Yurnigle	464	340	Mingende H	294	69	173	23.07.20	1	1	1	63	NBC-Simbu	Road
		Gaglmambo	527	760	Mingende H	694	136	380	21.07.20	1	1	1	122	NBC-Simbu	Road
		Kanguma	42	45	Mingende H	125	28	70	14.07.20	1	1	1	19	NBC-Simbu	Road
		Kolmane	173	197	Mingende H	312	49	154	21.07.20	1	1	1	46	NBC-Simbu	Road
		Mingende C/S	160	335	Mingende H	584	100	309	23.07.20	1	1	1	83	NBC-Simbu	Road
		Mingende C/Msn	211	332	Mingende H	601	100	291	23.07.20	1	1	1	87	NBC-Simbu	Road
9	KUNBI		3,430	3,778		3,369	674	1,782		10	10	10	237		
		Kunbi	478	446	Mingende H	520	100	265	16.07.20	1	1	1	57	NBC-Simbu	Road
		Koronigle	263	383	Mingende H	359	75	182	19.07.20	1	1	1	57	NBC-Simbu	Road
		Kaglma	434	395	Mingende H	229	46	115	17.07.20	1	1	1	0	NBC-Simbu	Road
		Komugl	137	192	Mingende H	192	47	106	15.07.20	1	1	1	37	NBC-Simbu	Road
		Yume	46	106	Mingende H	155	35	87	15.07.20	1	1	1	13	NBC-Simbu	Road
		Waiyaundo	204	315	Mingende H	354	76	198	17.07.20	1	1	1	2	NBC-Simbu	Road
		Dimbi	620	457	Mingende H	441	83	233	16.07.20	1	1	1	41	NBC-Simbu	Road
		Kombuglomogo	460	585	Mingende H	281	55	154	17.07.20	1	1	1	7	NBC-Simbu	Road
		Kutnigle	158	580	Mingende H	370	64	197	23.07.20	1	1	1	2	NBC-Simbu	Road
		Kuimar	632	319	Mingende H	468	93	245	17.07.20	1	1	1	21	NBC-Simbu	Road
10	KOMBUKU		4,039	4,702		4,376	795	2,291		9	9	9	492		
		Baglepera	736	580	Mingende H	554	93	291	22.07.20	1	1	1	50	NBC-Simbu	Road
		Waingar	647	469	Mingende H	528	100	281	22.07.20	1	1	1	81	NBC-Simbu	Road
		Tawiakalage	409	468	Mingende H	405	85	224	22.07.20	1	1	1	46	NBC-Simbu	Road
		Mandaisuglo	771	787	Mingende H	718	108	353	22.07.20	1	1	1	34	NBC-Simbu	Road
		Gingiu	544	513	Mingende H	484	100	260	22.07.20	1	1	1	69	NBC-Simbu	Road
		Mingainuglo	386	374	Mingende H	489	79	259	22.07.20	1	1	1	69	NBC-Simbu	Road
		Simgau C/S	384	743	Mingende H	543	95	285	21.07.20	1	1	1	52	NBC-Simbu	Road
		Kondiu H/S	162	243	Mingende H	147	38	84	22.07.20	1	1	1	38	NBC-Simbu	Road

LLG	WARD	VILLAGE	Estimated 2020 Data Based On 2000 Census	Estimated 2020 Data Based On 2017 Data	Health Centre	Population Surveyed	House Holds Surveyed	Nets Issued	Date Of Distribution	Villages	Digicel	Bmobile	Houses With Radios	Radio Networks	Comment
		Kondi		526	Mingende H	508	97	254	22.07.20	1	1	1	53	NBC-Simbu	Road
11	SIAMBUGLA WAUGKU		1,798	1,468		1,619	324	791		7	7	0	0		
		Mondadrugl	537	539	Kendine HC	459	100	224	23.07.20	1	1	0	0	FM	Road / 3 Hr Trek
		Parmugl	129	140	Kendine HC	218	38	107	23.07.20	1	1	0	0	FM	Road / 3 Hr Trek
		Dirkule	213	119	Kendine HC	52	12	25	23.07.20	1	1	0	0	FM	Road / 3 Hr Trek
		Gugurua	116	35	Kendine HC	277	32	132	23.07.20	1	1	0	0	FM	Road / 3 Hr Trek
		Yoglogaima	297	311	Kendine HC	247	63	122	23.07.20	1	1	0	0	FM	Road / 3 Hr Trek
		Metne	110	100	Kendine HC	161	33	81	23.07.20	1	1	0	0	FM	Road / 3 Hr Trek
		Tauyadumo	396	224	Kendine HC	205	46	100	23.07.20	1	1	0	0	FM	Road / 3 Hr Trek
12	SIAMBUGLA WAUKU		1,408	2,233		1,683	291	810		6	6	0	0		
		Engre	177	460	Kendine HC	348	50	167	23.07.20	1	1	0	0	FM	Road / 3 Hr Trek
		Konbi	407	536	Kendine HC	282	60	139	23.07.20	1	1	0	0	FM	Road / 3 Hr Trek
		Miane	137	428	Kendine HC	593	90	275	23.07.20	1	1	0	0	FM	Road / 3 Hr Trek
		Gaglbuna	209	169	Kendine HC	95	23	49	23.07.20	1	1	0	0	FM	Road / 3 Hr Trek
		Murbo	314	214	Kendine HC	244	48	121	23.07.20	1	1	0	0	FM	Road / 3 Hr Trek
		Dirnigle	164	426	Kendine HC	121	20	59	23.07.20	1	1	0	0	FM	Road / 3 Hr Trek
13	GENA YOGOMBO		1,908	1,886		2,767	581	1,367		6	6	0	0		
		Kambu	1,119	1,152	Kendine HC	817	163	397	22.07.20	1	1	0	0	FM	Road / 3 Hr Trek
		Singe	280	220	Kendine HC	653	132	327	22.07.20	1	1	0	0	FM	Road / 3 Hr Trek
		Tamugl	419	340	Kendine HC	460	93	226	22.07.20	1	1	0	0	FM	Road / 3 Hr Trek
		Aglaur	91	175	Kendine HC	215	43	104	22.07.20	1	1	0	0	FM	Road / 3 Hr Trek
		Mumugl	NEW		Kendine HC	354	100	181	22.07.20	1	1	0	0	FM	Road / 3 Hr Trek
		Gowo Puma	NEW		Kendine HC	268	50	132	22.07.20	1	1	0	0	FM	Road / 3 Hr Trek
			0	0											
KEROWAGI RURAL			50,641	53,417		58,932	10,396	27,592		103	102	34	3,287	102	
1	DAGE MITNA		1,503	3,329		3,362	644	1,654		5	4	2	200		
		Demange 1	479	1,455	Demange HC	1,401	285	691	09.07.20	1	1	1	79	FM	Road
		Demange 2	618	1,124	Demange HC	1,397	250	681	08.07.20	1	1	1	91	FM	Road
		Gambuglge	405	179	Demange HC	189	43	98	08.07.20	1	1	0	9	FM	Road
		Ganigle Laswara		572	Demange HC					1					Covered under Jiwaka
		Denge Laswara	NEW		Demange HC	375	66	184	09.07.20	1	1	0	21	FM	Road
2	DAGE MITNA 1		1,830	1,424		1,216	250	614		4	4	1	84		
		Denge	382	358	Demange HC	372	69	184	08.07.20	1	1	0	8	FM	Road
		Du	516	248	Demange HC	121	26	61	07.07.20	1	1	1	9	FM	Road
		Boi	868	668	Demange HC	628	135	321	08.07.20	1	1	0	43	FM	Road
		Denge Community School	65	150	Demange HC	95	20	48	08.07.20	1	1	0	24	FM	Road
3	DAGE MITNA 2		1,901	2,145		1,941	401	968		4	4	4	196		
		Niglgogl	415	482	Demange HC	477	100	234	08.07.20	1	1	1	29	FM	Road
		Kewamugl	757	894	Demange HC	818	163	411	08.07.20	1	1	1	101	FM	Road
		Kugayam	497	564	Demange HC	410	88	203	08.07.20	1	1	1	41	FM	Road
		Mondia	232	204	Demange HC	236	50	120	08.07.20	1	1	1	25	FM	Road
4	DAGE YOGOMBO 1		3,550	5,027		4,760	799	2,283		5	5	5	0		
		Kuglgonange	1,073	2,264	Miunde HC	2,499	436	1,201	07.07.20	1	1	1	0	Radio Simbu	Road
		Kombuglo	900	692	Miunde HC	1,137	150	544	07.07.20	1	1	1	0	Radio Simbu	Road
		Moroma Sda Msn	1,084	478	Miunde HC	134	23	63	07.07.20	1	1	1	0	Radio Simbu	Road
		Yomba Community School	493	576	Miunde HC	43	8	21	07.07.20	1	1	1	0	Radio Simbu	Road
		Niglgol		1,018	Miunde HC	947	182	454	09.07.20	1	1	1	0	Radio Simbu	1 Hr Trek
5	DAGE YOGOMBO 2		2,064	2,598		1,953	389	940		3	3	3	0		
		Moroma 2	504	313	Miunde HC	223	50	107	06.07.20	1	1	1	0	Radio Simbu	Road
		Miunde	986	2,019	Miunde HC	1,380	261	665	06.07.20	1	1	1	0	Radio Simbu	Road
		Miunde Community School	575	266	Miunde HC	350	78	168	06.07.20	1	1	1	0	Radio Simbu	Road
6	KAMANERU		3,276	2,584		2,255	455	1,049		6	6	0	359		
		Siure	261	257	Kerowagi HC	230	40	102	09.07.20	1	1	0	12	NBC	Road
		Pukar	955	595	Kerowagi HC	475	93	229	09.07.20	1	1	0	41	NBC	Road
		Kangri Range	1,073	1,215	Kerowagi HC	1,076	230	508	09.07.20	1	1	0	230	NBC	Road
		Amdi	544	303	Kerowagi HC	191	42	88	09.07.20	1	1	0	38	NBC	Road
		Gu	420	195	Kerowagi HC	192	40	86	09.07.20	1	1	0	28	NBC	Road
		Siure Cath/Mission	23	19	Kerowagi HC	91	10	36	09.07.20	1	1	0	10	NBC	Road
7	SILKU		3,198	2,713		2,830	564	1,324		6	6	0	432		
		Tauglpene	594	702	Kerowagi HC	384	98	176	09.07.20	1	1	0	98	NBC	Road
		Kurumugl 1	352	361	Kerowagi HC	340	90	166	09.07.20	1	1	0	0	NBC	Road
		Goglime	877	588	Kerowagi HC	420	99	197	09.07.20	1	1	0	99	NBC	Road
		Singemambuno	713	363	Kerowagi HC	732	139	335	09.07.20	1	1	0	135	NBC	Road
		Patna	662	699	Kerowagi HC	593	110	279	09.07.20	1	1	0	100	NBC	Road
		Giruage	NEW		Kerowagi HC	361	28	171	17.07.20	1	1	0	0	NBC	Road
8	KAMENERU 2		1,130	2,035		3,632	472	1,554		4	4	0	339		
		Kurumugl 2	493	175	Kerowagi HC	730	97	299	08.07.20	1	1	0	97	NBC	Road
		Don Bosco InStreet	38	888	Kerowagi HC	1,630	175	680	08.07.20	1	1	0	118	NBC	Road
		Cis Barawagi	561	236	Kerowagi HC	322	50	161	08.07.20	1	1	0	40	NBC	Road
		Pwd Compound	38	737	Kerowagi HC	950	150	414	08.07.20	1	1	0	84	NBC	Road
9	PAGAU 1		3,132	1,247		1,682	308	770		6	6	0	0		
		Dawagle (Endeyaundo)	270	303	Kerowagi HC	192	36	76	10.07.20	1	1	0	0	NBC	Road
		Nek	1,585	233	Kerowagi HC	228	50	112	10.07.20	1	1	0	0	NBC	Road
		Tamboboglkwa	84	114	Kerowagi HC	292	50	132	10.07.20	1	1	0	0	NBC	Road
		Kaulan/Mogma	215	97	Kerowagi HC	140	40	68	10.07.20	1	1	0	0	NBC	Road
		Dambuna	685	302	Kerowagi HC	162	35	80	10.07.20	1	1	0	0	NBC	Road
		Nombuna	293	198	Kerowagi HC	668	97	302	10.07.20	1	1	0	0	NBC	Road
10	PAGAU 2		2,422	2,174		2,094	406	977		6	6	0	0		
		Bunamugl	459	531	Kerowagi HC	625	100	284	11.07.20	1	1	0	0	NBC	Road
		Omugl	869	754	Kerowagi HC	667	148	316	11.07.20	1	1	0	0	NBC	Road
		Perumyaundo	361	316	Kerowagi HC	281	50	126	11.07.20	1	1	0	0	NBC	Road
		Dawage (Pogiko)	426	298	Kerowagi HC	146	29	72	11.07.20	1	1	0	0	NBC	Road
		Tambunoyaundo	160	137	Kerowagi HC	204	39	99	11.07.20	1	1	0	0	NBC	Road
		Bii/Ombrumugl	146	138	Kerowagi HC	171	40	80	11.07.20	1	1	0	0	NBC	Road
11	PAGAU \ SIBAIGU		1,912	1,474		1,626	239	766		5	5	0	0		
		Kondan	346	299	Kerowagi HC	330	30	139	12.07.20	1	1	0	0	NBC	Road

LLG	WARD	VILLAGE	Estimated 2020 Data Based On 2000 Census	Estimated 2020 Data Based On 2017 Data	Health Centre	Population Surveyed	House Holds Surveyed	Nets Issued	Date Of Distribution	Villages	Digicel	Bmobiile	Houses With Radios	Radio Networks	Comment
		Daruage	268	142	Kerowagi HC	203	34	99	12.07.20	1	1	0	0	NBC	Road
		Kombuglkande	630	520	Kerowagi HC	469	98	236	12.07.20	1	1	0	0	NBC	Road
		Tembai	316	287	Kerowagi HC	133	27	66	12.07.20	1	1	0	0	NBC	Road
		Kurumbamambuno	352	226	Kerowagi HC	491	50	226	12.07.20	1	1	0	0	NBC	Road
12	PAGAU 3		2,152	2,267		3,645	539	1,572		5	5	0	0		
		Nombuna	795	661	Kerowagi HC	1,371	150	496	10.07.20	1	1	0	0	NBC	Road
		Orua 1	194	639	Kerowagi HC	829	150	389	10.07.20	1	1	0	0	NBC	Road
		Orua 2	426	551	Kerowagi HC	756	118	347	10.07.20	1	1	0	0	NBC	Road
		Kiglendie	65	50	Kerowagi HC	243	50	125	10.07.20	1	1	0	0	NBC	Road
		Wagir	672	366	Kerowagi HC	446	71	215	10.07.20	1	1	0	0	NBC	Road
13	PAGAU 4		826	1,703		1,856	324	890		3	3	0	174		
		Anganoi	280	712	Bogo HC	602	124	290	17.07.20	1	1	0	39	FM	Road
		Gagan	110	493	Bogo HC	576	100	271	19.07.20	1	1	0	58	FM	Road
		Anganoi Community School	436	498	Bogo HC	678	100	329	17.07.20	1	1	0	77	FM	Road
14	GRAIGU 1		628	583		613	123	293		3	3	0	45		
		Bogo	563	412	Bogo HC	343	71	169	19.07.20	1	1	0	27	FM	Road
		Bogo Community School	11	102	Bogo HC	157	31	69	19.07.20	1	1	0	8	FM	Road
		Bogo H/C	53	69	Bogo HC	113	21	55	19.07.20	1	1	0	10	FM	Road
15	GRAIGU 2		1,922	1,405		1,091	236	533		4	4	0	70		
		Agumbanigle	616	549	Bogo HC	387	82	181	18.07.20	1	1	0	47	FM	Road / Trek
		Meke	980	406	Bogo HC	387	86	193	19.07.20	1	1	0	16	FM	Trek
		Ganigle Bridge		177	Bogo HC	207	45	106	19.07.20	1	1	0	0	FM	Road / Trek
		Bimambuno	325	274	Bogo HC	110	23	53	19.07.20	1	1	0	7	FM	Road
16	BINDEKU		1,473	1,124		1,113	185	535		3	3	0	93		
		Kawa	984	582	Bogo HC	572	83	275	20.07.20	1	1	0	52	FM	Road
		Elomba		399	Bogo HC	417	83	201	20.07.20	1	1	0	26	FM	Road
		Dinageyaugl	314	0	Bogo HC										Non-Existent
		Kuglbo - Eli	175	143	Bogo HC	124	19	59	19.07.20	1	1	0	15	FM	Road
17	DAMBA		3,615	5,530		6,224	1,114	2,985		8	8	8	0		
		Elu	436	644	Miunde HC	840	150	403	06.07.20	1	1	1	0	Radio Simbu	Road
		Elu Minta	527	335	Miunde HC	392	100	185	06.07.20	1	1	1	0	Radio Simbu	Road
		Kuglbagl 1	908	560	Miunde HC	438	89	205	07.07.20	1	1	1	0	Radio Simbu	Road
		Wambur	350	756	Miunde HC	976	150	468	09.07.20	1	1	1	0	Radio Simbu	Road / 1 Hr Trek
		Bundun	628	668	Miunde HC	618	134	298	06.07.20	1	1	1	0	Radio Simbu	Road / 1 Hr Trek
		Kurakan	462	466	Miunde HC	548	100	266	06.07.20	1	1	1	0	Radio Simbu	Road
		Kuglbagl	304	1,361	Miunde HC	1,456	250	700	06.07.20	1	1	1	0	Radio Simbu	Road
		Tambaran Block		740	Miunde HC	956	141	460	08.07.20	1	1	1	0	Radio Simbu	Road / 1 Hr Trek
18	NIMAIKANE		3,643	1,727		1,985	376	931		3	3	3	0		
		Gogomugl 1	1,889	466	Miunde HC	550	100	241	06.07.20	1	1	1	0	Radio Simbu	Road
		Ganige 2	687	836	Miunde HC	950	176	457	06.07.20	1	1	1	0	Radio Simbu	Road
		Gogomugl 2	1,067	426	Miunde HC	485	100	233	06.07.20	1	1	1	0	Radio Simbu	Road
19	DAGE YOGOMBE 3		2,502	3,082		3,199	596	1,548		5	5	5	0		
		Awage	755	209	Miunde HC	230	48	119	06.07.20	1	1	1	0	Radio Simbu	Road
		New Camp	226	276	Miunde HC	201	48	96	07.07.20	1	1	1	0	Radio Simbu	Road
		Kuragl	523	404	Miunde HC	1,044	146	505	07.07.20	1	1	1	0	Radio Simbu	Road
		Didim	626	1,193	Miunde HC	1,011	195	486	07.07.20	1	1	1	0	Radio Simbu	Road
		Ganigle 1	371	1,000	Miunde HC	713	159	342	07.07.20	1	1	1	0	Radio Simbu	Road
20	DAGE MITNA 3		1,195	1,475		1,759	296	866		3	3	3	172		
		Duakonange	780	1,008	Demange HC	1,137	184	558	09.07.20	1	1	1	131	FM	Road
		Parmauglo	219	311	Demange HC	487	86	240	07.07.20	1	1	1	29	FM	Road
		Kogonwage	196	156	Demange HC	135	26	68	09.07.20	1	1	1	12	FM	Road
21	KAMANIEKU \ SIAMBULA		4,518	4,965		6,671	1,143	3,011		6	6	0	1,123		
		Darambuno	978	831	Kerowagi HC	1,254	244	597	08.07.20	1	1	0	224	NBC	Road
		Gagul	1,252	1,396	Kerowagi HC	1,689	300	777	08.07.20	1	1	0	300	NBC	Road
		Niglpagange	1,185	799	Kerowagi HC	965	149	411	08.07.20	1	1	0	149	NBC	Road
		Dine	348	914	Kerowagi HC	1,378	200	559	08.07.20	1	1	0	200	NBC	Road
		Dendigle	679	956	Kerowagi HC	1,130	200	544	08.07.20	1	1	0	200	NBC	Road
		Gagul Community School	76	68	Kerowagi HC	255	50	123	08.07.20	1	1	0	50	NBC	Road
22	KEROWAGI URBAN		2,251	2,803		3,425	537	1,529		6	6	0	0		
		Riot Squad Res.	434	409	Kerowagi HC	518	100	234	12.07.20	1	1	0	0	NBC	Road
		Town - District Office	436	498	Kerowagi HC	859	110	365	12.07.20	1	1	0	0	NBC	Road
		Kerowagi High School	453	370	Kerowagi HC	282	50	125	12.07.20	1	1	0	0	NBC	Road
		Coffee Factory	335	299	Kerowagi HC	335	50	150	12.07.20	1	1	0	0	NBC	Road
		Hospital - Market	594	711	Kerowagi HC	886	127	405	12.07.20	1	1	0	0	NBC	Road
		Police Barracks		516	Kerowagi HC	545	100	250	12.07.20	1	1	0	0	NBC	Road
KUP RURAL			23,652	19,512		20,458	3,431	10,396		50	49	34	427	49	
1	KUMGA		2,627	3,409		3,686	618	1,834		8	8	8	54		
		Kup	502	386	Kup HC	724	116	344	11.07.20	1	1	1	3	KBM FM	Road
		Tembuka	371	473	Kup HC	820	125	425	13.07.20	1	1	1	4	KBM FM	Road
		Whagi Bridge	1,395	1,311	Kup HC	819	156	409	12.07.20	1	1	1	16	KBM FM	Road
		Dondua	314	341	Kup HC	414	70	215	12.07.20	1	1	1	12	KBM FM	Road
		Kup Stn.	27	334	Kup HC	339	56	166	11.07.20	1	1	1	0	KBM FM	Kup SHC staff included here
		Kup Community School	19	564	Kup HC	265	44	130	14.07.20	1	1	1	16	KBM FM	Includes Catholic Mission residents.
		Piawi	NEW		Kup HC	268	44	127	13.07.20	1	1	1	0	KBM FM	Trek from Kup SHC
		Tumun Suak Primary School	NEW		Kup HC	37	7	18	13.07.20	1	1	1	3	KBM FM	Road
2	KUMAI BONMEKU		2,774	2,746		2,286	432	1,148		5	5	5	39		
		Gamar 2	776	2,133	Kup HC	1,196	200	603	11.07.20	1	1	1	31	KBM FM	Road
		Kuzil	1,288	613	Kup HC	118	24	62	11.07.20	1	1	1	3	KBM FM	Road
		Niglgol	710	0	Kup HC										Non-Existent
		Mur High School	NEW		Kup HC	454	96	219	11.07.20	1	1	1	3	KBM FM	Includes small hamlets.
		Bouken	NEW		Kup HC	453	100	230	11.07.20	1	1	1	2	KBM FM	Road
		Gamar	NEW		Kup HC	65	12	34	11.07.20	1	1	1	0	KBM FM	Road
3	YURI		1,775	492		1,282	196	642		3	3	3	45		

LLG	WARD	VILLAGE	Estimated 2020 Data Based On 2000 Census	Estimated 2020 Data Based On 2017 Data	Health Centre	Population Surveyed	House Holds Surveyed	Nets Issued	Date Of Distribution	Villages	Digicel	Bmobile	Houses With Radios	Radio Networks	Comment
		Warabegua	647	259	Kup HC	459	61	227	12.07.20	1	1	1	22	KBM FM	Includes parts of Kuzil in ward 2.
		Domna	333	233	Kup HC	186	35	91	11.07.20	1	1	1	1	KBM FM	Includes small hamlets.
		Nilba	795	0	Kup HC	637	100	324	12.07.20	1	1	1	22	KBM FM	Road
4	KUMI DEINGEKU		1,103	1,172		1,064	197	545		5	4	4	22		
		Muru 1	761	709	Kup HC	441	92	239	11.07.20	1	1	1	6	KBM FM	Road
		Muru Community School	342	463	Kup HC	311	50	149	11.07.20	1	1	1	11	KBM FM	Road
		Mur High School	NEW		Kup HC	102	17	51	11.07.20	1	1	1	5	KBM FM	Road
		Bouken	NEW		Kup HC	210	38	106	14.07.20	1	1	1	0	KBM FM	Includes small hamlets.
		Gamar	NEW		Kup HC					1					All covered under Gamar 2.
5	KUMA KINDINGAPAM		1,398	1,899		2,119	403	1,104		7	7	7	25		
		Muru 2	304	591	Kup HC	258	47	137	11.07.20	1	1	1	2	KBM FM	Includes small hamlets.
		Gonga	449	659	Kup HC	364	78	185	14.07.20	1	1	1	10	KBM FM	Road
		Dobil	645	649	Kup HC	477	96	256	16.07.20	1	1	1	5	KBM FM	Road
		Domna 2	NEW		Kup HC	191	37	101	11.07.20	1	1	1	0	KBM FM	Road
		Airstrip	NEW		Kup HC	295	45	151	14.07.20	1	1	1	0	KBM FM	Road
		Gigimunam	NEW		Kup HC	253	50	131	14.07.20	1	1	1	7	KBM FM	Road
		Dibiu	NEW		Kup HC	281	50	143	14.07.20	1	1	1	1	KBM FM	Includes small hamlets.
6	ENDUGLA NANGINKU		3,036	2,533		2,773	450	1,418		5	5	5	81		
		Kerenga	1,130	763	Kup HC	747	100	384	11.07.20	1	1	1	0	KBM FM	Road
		Gawale	561	660	Kup HC	466	100	244	16.07.20	1	1	1	0	KBM FM	Road
		Gurumugl	1,098	877	Kup HC	901	150	462	11.07.20	1	1	1	19	KBM FM	Road
		Dimbai	247	233	Kup HC	371	50	189	14.07.20	1	1	1	42	KBM FM	Road
		Konkap	NEW		Kup HC	288	50	139	11.07.20	1	1	1	20	KBM FM	Road
7	ENDUGLA KUNAUNAKA		3,031	3,571		3,955	566	1,940		5	5	2	48		
		Iuage	738	1,013	Kup HC	362	67	180	12.07.20	1	1	1	0	KBM FM	Road
		Kalkanigle	NEW		Kup HC	1,270	100	621	15.07.20	1	1	1	21	KBM FM	Road
		Gunbo	1,444	1,280	Neregaima M	1,301	213	602	08.07.20	1	1	0	17	Radio Simbu	Previously under Kup HC
		Erimandai	329	228	Neregaima M	228	49	118	08.07.20	1	1	0	0	Radio Simbu	Previously under Kup HC
		Konmil Community School	519	1,049	Neregaima M	794	137	419	08.07.20	1	1	0	10	Radio Simbu	Previously under Kup HC
8	ENDUGLA KUNAUNAKU 2		1,560	731		604	97	303		2	2	0	0		
		Bi	986	552	Neregaima M	501	82	251	08.07.20	1	1	0	0	Radio Simbu	Previously under Kup HC
		Tambunoyaundo	575	179	Neregaima M	103	15	52	08.07.20	1	1	0	0	Radio Simbu	Previously under Kup HC
9	BANDI 2		3,316	1,618		1,665	272	855		6	6	0	61		
		Guruwal	656	106	Neregaima M	183	36	99	08.07.20	1	1	0	0	Radio Simbu	Road
		Yopa	729	397	Neregaima M	802	105	402	08.07.20	1	1	0	46	Radio Simbu	Road
		Kui	693	234	Neregaima M	228	47	120	08.07.20	1	1	0	15	Radio Simbu	Road
		Urugai/kuglame Community	774	520	Neregaima M	177	35	88	08.07.20	1	1	0	0	Radio Simbu	Road
		Duamelma	464	153	Neregaima M	164	28	85	08.07.20	1	1	0	0	Radio Simbu	Road trek
		Ulwai		206	Neregaima M	111	21	61	08.07.20	1	1	0	0	Radio Simbu	Road
10	BANDI No 1		3,031	1,342		1,024	200	607		4	4	0	52		
		Moromambuno	1,425	284	Neregaima M	268	50	145	08.07.20	1	1	0	0	Radio Simbu	Road trek
		Neregaima	788	314	Neregaima M	152	40	139	08.07.20	1	1	0	15	Radio Simbu	Road
		Kamtai	548	535	Neregaima M	429	80	225	08.07.20	1	1	0	37	Radio Simbu	Road
		Neregaima Cath Mission	270	209	Neregaima M	175	30	98	08.07.20	1	1	0	0	Radio Simbu	Road